

**Product Name: Ribosomal Protein LP2 Rabbit Polyclonal Antibody**  
**Catalog #: APRab17171**

---

## Summary

<b>Production Name</b>	Ribosomal Protein LP2 Rabbit Polyclonal Antibody
<b>Description</b>	Rabbit Polyclonal Antibody
<b>Host</b>	Rabbit
<b>Application</b>	IHC-P,IF-P,IF-F,ICC/IF,ELISA
<b>Reactivity</b>	Human,Mouse,Rat

## Performance

<b>Conjugation</b>	Unconjugated
<b>Modification</b>	Unmodified
<b>Isotype</b>	IgG
<b>Clonality</b>	Polyclonal
<b>Form</b>	Liquid
<b>Storage</b>	Store at 4°C short term. Aliquot and store at -20°C long term. Avoid freeze/thaw cycles.
<b>Buffer</b>	Liquid in PBS containing 50% glycerol, 0.5% BSA and 0.02% New type preservative N.
<b>Purification</b>	Affinity purification

## Immunogen

<b>Gene Name</b>	RPLP2
<b>Alternative Names</b>	RPLP2; D11S2243E; RPP2; 60S acidic ribosomal protein P2; Renal carcinoma antigen NY-REN-44
<b>Gene ID</b>	6181.0
<b>SwissProt ID</b>	P05387. The antiserum was produced against synthesized peptide derived from human RPLP2. AA range:21-70

## Application

<b>Dilution Ratio</b>	IHC-P 1:100-1:300, ELISA 1:40000, IF-P/IF-F/ICC/IF 1:50-200
<b>Molecular Weight</b>	

**Product Name: Ribosomal Protein LP2 Rabbit Polyclonal Antibody**  
**Catalog #: APRab17171**

---

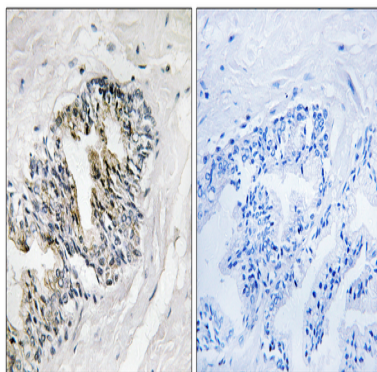
## Background

Ribosomes, the organelles that catalyze protein synthesis, consist of a small 40S subunit and a large 60S subunit. Together these subunits are composed of 4 RNA species and approximately 80 structurally distinct proteins. This gene encodes a ribosomal phosphoprotein that is a component of the 60S subunit. The protein, which is a functional equivalent of the E. coli L7/L12 ribosomal protein, belongs to the L12P family of ribosomal proteins. It plays an important role in the elongation step of protein synthesis. Unlike most ribosomal proteins, which are basic, the encoded protein is acidic. Its C-terminal end is nearly identical to the C-terminal ends of the ribosomal phosphoproteins P0 and P1. The P2 protein can interact with P0 and P1 to form a pentameric complex consisting of P1 and P2 dimers, and a P0 monomer. The protein is located in the cytoplasm. As is typical for genes: function: Plays an important role in the elongation step of protein synthesis., similarity: Belongs to the ribosomal protein L12P family., subunit: P1 and P2 exist as dimers at the large ribosomal subunit.,

## Research Area

Ribosome;

## Image Data



Immunohistochemistry analysis of paraffin-embedded human prostate carcinoma tissue, using RPLP2 Antibody. The picture on the right is blocked with the synthesized peptide.

## Note

For research use only.