

Product Name: Ribosomal Protein L5 Rabbit Polyclonal Antibody
Catalog #: APRab17168



Summary

Production Name	Ribosomal Protein L5 Rabbit Polyclonal Antibody
Description	Rabbit Polyclonal Antibody
Host	Rabbit
Application	WB,IP,IHC-P,IF-P,IF-F,ICC/IF,ELISA
Reactivity	Human,Mouse,Rat

Performance

Conjugation	Unconjugated
Modification	Unmodified
Isotype	IgG
Clonality	Polyclonal
Form	Liquid
Storage	Store at 4°C short term. Aliquot and store at -20°C long term. Avoid freeze/thaw cycles.
Buffer	Liquid in PBS containing 50% glycerol, 0.5% BSA and 0.02% New type preservative N.
Purification	Affinity purification

Immunogen

Gene Name	RPL5
Alternative Names	RPL5; MSTP030; 60S ribosomal protein L5
Gene ID	6125.0
SwissProt ID	P46777.The antiserum was produced against synthesized peptide derived from human RPL5. AA range:161-210

Application

Dilution Ratio	WB 1:500-2000, IP 1:50-200, IHC-P 1:100-500, IF-P/IF-F/ICC/IF/ICC 1:100-500, ELISA 1:5000-20000
Molecular Weight	34kDa

Product Name: Ribosomal Protein L5 Rabbit Polyclonal Antibody
Catalog #: APRab17168



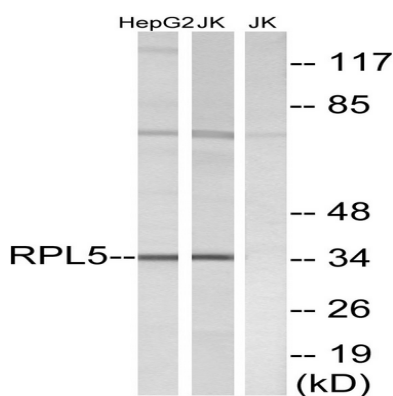
Background

Ribosomes, the organelles that catalyze protein synthesis, consist of a small 40S subunit and a large 60S subunit. Together these subunits are composed of 4 RNA species and approximately 80 structurally distinct proteins. This gene encodes a ribosomal protein that is a component of the 60S subunit. The protein belongs to the L18P family of ribosomal proteins. It is located in the cytoplasm. The protein binds 5S rRNA to form a stable complex called the 5S ribonucleoprotein particle (RNP), which is necessary for the transport of nonribosome-associated cytoplasmic 5S rRNA to the nucleolus for assembly into ribosomes. The protein interacts specifically with the beta subunit of casein kinase II. Variable expression of this gene in colorectal cancers compared to adjacent normal tissues has been observed, although no correlation between the level of expression and the severity of the disease has been found. Defects in RPL5 are the cause of Diamond-Blackfan anemia type 6 (DBA6) [MIM:612561]. DBA6 is a form of Diamond-Blackfan anemia, a congenital non-regenerative hypoplastic anemia that usually presents early in infancy. Diamond-Blackfan anemia is characterized by a moderate to severe macrocytic anemia, erythroblastopenia, and an increased risk of malignancy. 30 to 40% of Diamond-Blackfan anemia patients present with short stature and congenital anomalies, the most frequent being craniofacial (Pierre-Robin syndrome and cleft palate), thumb and urogenital anomalies. **function:** Required for rRNA maturation and formation of the 60S ribosomal subunits. This protein binds 5S RNA. **similarity:** Belongs to the ribosomal protein L18P family.

Research Area

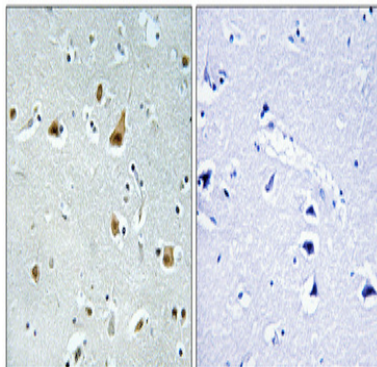
Ribosome;

Image Data



Western blot analysis of lysates from Jurkat and HepG2 cells, using RPL5 Antibody. The lane on the right is blocked with the synthesized peptide.

**Product Name: Ribosomal Protein L5 Rabbit Polyclonal
Antibody**
Catalog #: APRab17168



Immunohistochemical analysis of paraffin-embedded Human brain. Antibody was diluted at 1:100 (4°,overnight) . High-pressure and temperature Tris-EDTA,pH8.0 was used for antigen retrieval. Negative contrl (right) obtaned from antibody was pre-absorbed by immunogen peptide.

Note

For research use only.