

Product Name: Ribosomal Protein L31 Rabbit Polyclonal Antibody
Catalog #: APRab17158

Summary

Production Name	Ribosomal Protein L31 Rabbit Polyclonal Antibody
Description	Rabbit Polyclonal Antibody
Host	Rabbit
Application	WB,IHC-P,IF-P,IF-F,ICC/IF,ELISA
Reactivity	Human,Mouse,Rat

Performance

Conjugation	Unconjugated
Modification	Unmodified
Isotype	IgG
Clonality	Polyclonal
Form	Liquid
Storage	Store at 4°C short term. Aliquot and store at -20°C long term. Avoid freeze/thaw cycles.
Buffer	Liquid in PBS containing 50% glycerol, 0.5% BSA and 0.02% New type preservative N.
Purification	Affinity purification

Immunogen

Gene Name	RPL31
Alternative Names	RPL31; 60S ribosomal protein L31
Gene ID	6160.0
SwissProt ID	P62899. The antiserum was produced against synthesized peptide derived from human RPL31. AA range:61-110

Application

Dilution Ratio	WB 1:500-2000, IHC-P 1:100-1:300, ELISA 1:40000, IF-P/IF-F/ICC/IF 1:50-200
Molecular Weight	

Background

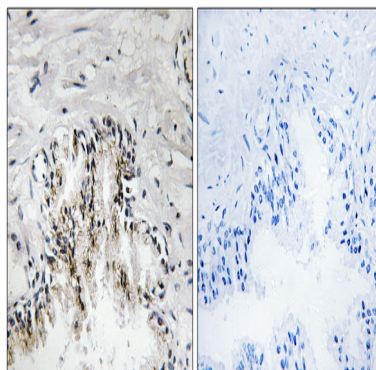
Product Name: Ribosomal Protein L31 Rabbit Polyclonal Antibody
Catalog #: APRab17158

Ribosomes, the organelles that catalyze protein synthesis, consist of a small 40S subunit and a large 60S subunit. Together these subunits are composed of 4 RNA species and approximately 80 structurally distinct proteins. This gene encodes a ribosomal protein that is a component of the 60S subunit. The protein belongs to the L31E family of ribosomal proteins. It is located in the cytoplasm. Higher levels of expression of this gene in familial adenomatous polypos compared to matched normal tissues have been observed. As is typical for genes encoding ribosomal proteins, there are multiple processed pseudogenes of this gene dispersed through the genome. Alternatively spliced transcript variants encoding distinct isoforms have been found for this gene. [provided by RefSeq, Jul 2008],similarity:Belongs to the ribosomal protein L31e family.,

Research Area

Ribosome;

Image Data



Immunohistochemistry analysis of paraffin-embedded human prostate carcinoma tissue, using RPL31 Antibody. The picture on the right is blocked with the synthesized peptide.

Note

For research use only.