

Product Name: Ribosomal Protein L26L Rabbit Polyclonal Antibody
Catalog #: APRab17153

Summary

Production Name	Ribosomal Protein L26L Rabbit Polyclonal Antibody
Description	Rabbit Polyclonal Antibody
Host	Rabbit
Application	WB,IHC-P,IF-P,IF-F,ICC/IF,ELISA
Reactivity	Human,Mouse,Rat

Performance

Conjugation	Unconjugated
Modification	Unmodified
Isotype	IgG
Clonality	Polyclonal
Form	Liquid
Storage	Store at 4°C short term. Aliquot and store at -20°C long term. Avoid freeze/thaw cycles.
Buffer	Liquid in PBS containing 50% glycerol, 0.5% BSA and 0.02% New type preservative N.
Purification	Affinity purification

Immunogen

Gene Name	RPL26L1
Alternative Names	RPL26L1; RPL26P1; 60S ribosomal protein L26-like 1
Gene ID	51121.0
SwissProt ID	Q9UNX3.The antiserum was produced against synthesized peptide derived from human RPL26L. AA range:96-145

Application

Dilution Ratio	WB 1:500-1:2000, IHC-P 1:100-1:300, ELISA 1:40000, IF-P/IF-F/ICC/IF 1:50-200
Molecular Weight	20kDa

**Product Name: Ribosomal Protein L26L Rabbit
Polyclonal Antibody
Catalog #: APRab17153**



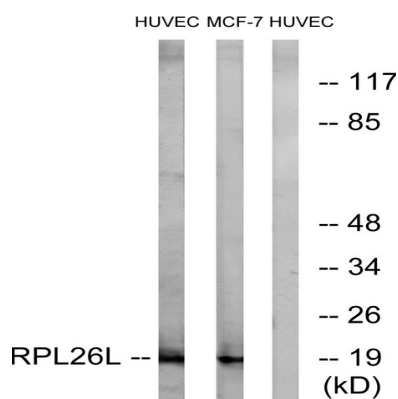
Background

This gene encodes a protein that shares high sequence similarity with ribosomal protein L26. Alternative splicing results in multiple transcript variants encoding the same protein. [provided by RefSeq, Dec 2015],similarity:Belongs to the ribosomal protein L24P family.,

Research Area

Ribosome;

Image Data

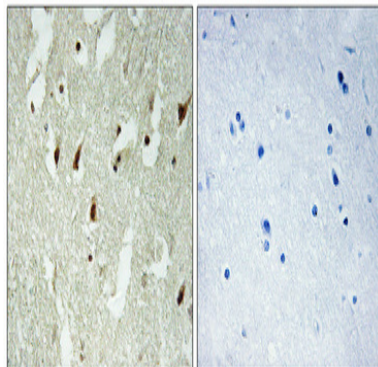


Western blot analysis of lysates from HUVEC and MCF-7 cells, using RPL26L Antibody. The lane on the right is blocked with the synthesized peptide.



Western Blot analysis of various cells using Ribosomal Protein L26L Polyclonal Antibody diluted at 1 : 2000

**Product Name: Ribosomal Protein L26L Rabbit
Polyclonal Antibody
Catalog #: APRab17153**



Immunohistochemical analysis of paraffin-embedded Human brain. Antibody was diluted at 1:100 (4°,overnight) . High-pressure and temperature Tris-EDTA,pH8.0 was used for antigen retrieval. Negative contrl (right) obtaned from antibody was pre-absorbed by immunogen peptide.

Note

For research use only.