

Product Name: Rhophilin Rabbit Polyclonal Antibody
Catalog #: APRab17135



Summary

Production Name	Rhophilin Rabbit Polyclonal Antibody
Description	Rabbit Polyclonal Antibody
Host	Rabbit
Application	WB,ELISA,IHC-P
Reactivity	Human,Rat,Mouse

Performance

Conjugation	Unconjugated
Modification	Unmodified
Isotype	IgG
Clonality	Polyclonal
Form	Liquid
Storage	Store at 4°C short term. Aliquot and store at -20°C long term. Avoid freeze/thaw cycles.
Buffer	Liquid in PBS containing 50% glycerol, 0.5% BSA and 0.02% New type preservative N.
Purification	Affinity purification

Immunogen

Gene Name	RHPN1
Alternative Names	RHPN1; KIAA1929; Rhophilin-1; GTP-Rho-binding protein 1
Gene ID	114822.0
SwissProt ID	Q8TCX5.The antiserum was produced against synthesized peptide derived from human RHPN1. AA range:474-523

Application

Dilution Ratio	WB 1:500-2000, IHC-P 1:50-300, ELISA 2000-20000
Molecular Weight	100kDa

Background

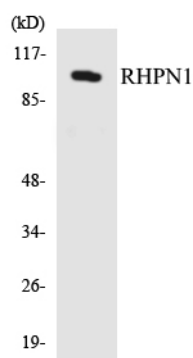
Product Name: Rhophilin Rabbit Polyclonal Antibody
Catalog #: APRab17135



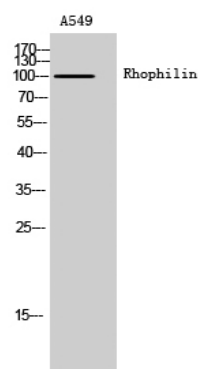
domain:The PDZ domain mediates interaction with ROPN1.,function:Has no enzymatic activity. May serve as a target for Rho, and interact with some cytoskeletal component upon Rho binding or relay a Rho signal to other molecules.,similarity:Belongs to the RHPN family.,similarity:Contains 1 BRO1 domain.,similarity:Contains 1 PDZ (DHR) domain.,similarity:Contains 1 REM (Hr1) repeat.,subunit:Binds specifically to GTP-Rho. Interacts with ROPN1.,domain:The PDZ domain mediates interaction with ROPN1.,function:Has no enzymatic activity. May serve as a target for Rho, and interact with some cytoskeletal component upon Rho binding or relay a Rho signal to other molecules.,similarity:Belongs to the RHPN family.,similarity:Contains 1 BRO1 domain.,similarity:Contains 1 PDZ (DHR) domain.,similarity:Contains 1 REM (Hr1) repeat.,subunit:Binds specifically to GTP-Rho. Interacts with ROPN1.,

Research Area

Image Data



Western blot analysis of the lysates from HepG2 cells using RHPN1 antibody.



Western Blot analysis of A549 cells using Rhophilin Polyclonal Antibody

Note

For research use only.