

**Product Name: RGS14 Rabbit Polyclonal Antibody**  
**Catalog #: APRab17091**



## Summary

<b>Production Name</b>	RGS14 Rabbit Polyclonal Antibody
<b>Description</b>	Rabbit Polyclonal Antibody
<b>Host</b>	Rabbit
<b>Application</b>	WB,ELISA,IHC-P
<b>Reactivity</b>	Human,Mouse,Rat

## Performance

<b>Conjugation</b>	Unconjugated
<b>Modification</b>	Unmodified
<b>Isotype</b>	IgG
<b>Clonality</b>	Polyclonal
<b>Form</b>	Liquid
<b>Storage</b>	Store at 4°C short term. Aliquot and store at -20°C long term. Avoid freeze/thaw cycles.
<b>Buffer</b>	Liquid in PBS containing 50% glycerol, 0.5% BSA and 0.02% New type preservative N.
<b>Purification</b>	Affinity purification

## Immunogen

<b>Gene Name</b>	RGS14
<b>Alternative Names</b>	RGS14; Regulator of G-protein signaling 14; RGS14
<b>Gene ID</b>	10636.0
<b>SwissProt ID</b>	O43566.The antiserum was produced against synthesized peptide derived from human RGS14. AA range:125-174

## Application

<b>Dilution Ratio</b>	WB 1:500-2000, IHC-P 1:50-300, ELISA 2000-20000
<b>Molecular Weight</b>	65kDa

## Background

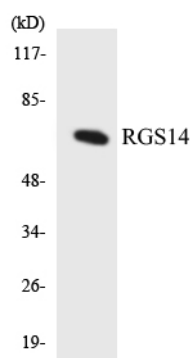
**Product Name: RGS14 Rabbit Polyclonal Antibody**  
**Catalog #: AP Rab17091**



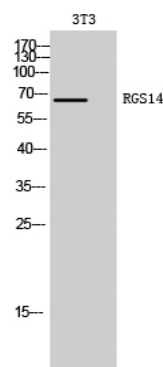
This gene encodes a member of the regulator of G-protein signaling family. This protein contains one RGS domain, two Raf-like Ras-binding domains (RBDs), and one GoLoco domain. The protein attenuates the signaling activity of G-proteins by binding, through its GoLoco domain, to specific types of activated, GTP-bound G alpha subunits. Acting as a GTPase activating protein (GAP), the protein increases the rate of conversion of the GTP to GDP. This hydrolysis allows the G alpha subunits to bind G beta/gamma subunit heterodimers, forming inactive G-protein heterotrimers, thereby terminating the signal. Alternate transcriptional splice variants of this gene have been observed but have not been thoroughly characterized. [provided by RefSeq, Jul 2008],function:Inhibits signal transduction by increasing the GTPase activity of G protein alpha subunits thereby driving them into their inactive GDP-bound form.,similarity:Contains 1 GoLoco domain.,similarity:Contains 1 RGS domain.,similarity:Contains 2 RBD (Ras-binding) domains.,

## Research Area

## Image Data



Western blot analysis of the lysates from HUVEC cells using RGS14 antibody.



Western Blot analysis of 3T3 cells using RGS14 Polyclonal Antibody cells nucleus extracted by Minute TM Cytoplasmic and Nuclear Fractionation kit (SC-003, Invent biotech, MN, USA) .

**Product Name: RGS14 Rabbit Polyclonal Antibody**  
**Catalog #: APRab17091**

---



**Note**

For research use only.