

Summary

Production Name	RGS10 Rabbit Polyclonal Antibody
Description	Rabbit Polyclonal Antibody
Host	Rabbit
Application	WB,IHC-P,IF-P,IF-F,ICC/IF,ELISA
Reactivity	Human,Mouse,Rat

Performance

Conjugation	Unconjugated
Modification	Unmodified
Isotype	IgG
Clonality	Polyclonal
Form	Liquid
Storage	Store at 4°C short term. Aliquot and store at -20°C long term. Avoid freeze/thaw cycles.
Buffer	Liquid in PBS containing 50% glycerol, 0.5% BSA and 0.02% New type preservative N.
Purification	Affinity purification

Immunogen

Gene Name	RGS10
Alternative Names	RGS10; Regulator of G-protein signaling 10; RGS10
Gene ID	6001.0
SwissProt ID	O43665.The antiserum was produced against synthesized peptide derived from human RGS10. AA range:80-129

Application

Dilution Ratio	WB 1:500-1:2000, IHC-P 1:100-1:300, ELISA 1:10000, IF-P/IF-F/ICC/IF 1:50-200
Molecular Weight	20kDa

Background

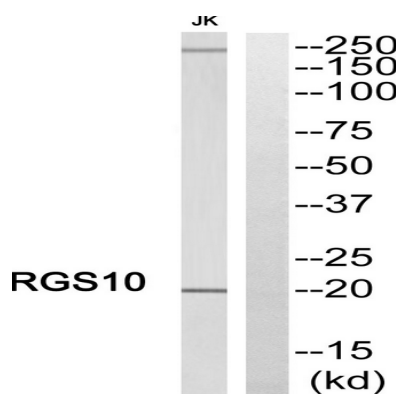
Product Name: RGS10 Rabbit Polyclonal Antibody
Catalog #: APRab17089



Regulator of G protein signaling (RGS) family members are regulatory molecules that act as GTPase activating proteins (GAPs) for G alpha subunits of heterotrimeric G proteins. RGS proteins are able to deactivate G protein subunits of the Gi alpha, Go alpha and Gq alpha subtypes. They drive G proteins into their inactive GDP-bound forms. Regulator of G protein signaling 10 belongs to this family. All RGS proteins share a conserved 120-amino acid sequence termed the RGS domain. This protein associates specifically with the activated forms of the two related G-protein subunits, G-alpha_{i3} and G-alpha_z but fails to interact with the structurally and functionally distinct G-alpha subunits. Regulator of G protein signaling 10 protein is localized in the nucleus. Two transcript variants encoding different isoforms have been found for this gene. [provided by RefSeq, Jul 2008],function:Inhibits signal transduction by increasing the GTPase activity of G protein alpha subunits thereby driving them into their inactive GDP-bound form. Associates specifically with the activated forms of the G protein subunits G(i)-alpha and G(z)-alpha but fails to interact with the structurally and functionally distinct G(s)-alpha subunit. Activity on G(z)-alpha is inhibited by palmitoylation of the G-protein.,PTM:Isoform 3 is phosphorylated on Ser-16.,similarity:Contains 1 RGS domain.,

Research Area

Image Data



Western blot analysis of RGS10 Antibody. The lane on the right is blocked with the RGS10 peptide.



Western Blot analysis of various cells using RGS10 Polyclonal Antibody

Product Name: RGS10 Rabbit Polyclonal Antibody
Catalog #: APRab17089



Note

For research use only.