

Product Name: RGP2/3/4/6/8 Rabbit Polyclonal Antibody
Catalog #: APRab17084

Summary

Production Name	RGP2/3/4/6/8 Rabbit Polyclonal Antibody
Description	Rabbit Polyclonal Antibody
Host	Rabbit
Application	WB,ELISA,IHC-P
Reactivity	Human,Rat,Mouse

Performance

Conjugation	Unconjugated
Modification	Unmodified
Isotype	IgG
Clonality	Polyclonal
Form	Liquid
Storage	Store at 4°C short term. Aliquot and store at -20°C long term. Avoid freeze/thaw cycles.
Buffer	Liquid in PBS containing 50% glycerol, 0.5% BSA and 0.02% New type preservative N.
Purification	Affinity purification

Immunogen

Gene Name	RGP2
Alternative Names	
Gene ID	729540/84220/729857
SwissProt ID	O14715/Q53T03/Q7Z3J3/A6NKT7/P0C839.The antiserum was produced against synthesized peptide derived from human RGP2/3/4/6/8. AA range:577-626

Application

Dilution Ratio	WB 1:500-2000, IHC-P 1:50-300, ELISA 2000-20000
Molecular Weight	110kDa

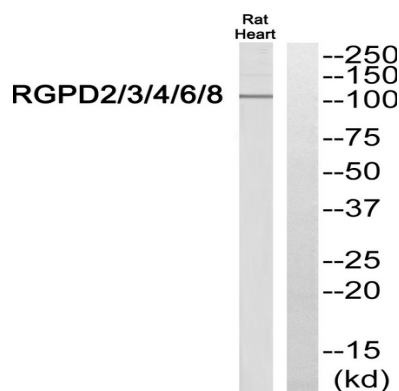
Product Name: RGP2/3/4/6/8 Rabbit Polyclonal Antibody
Catalog #: AP217084

Background

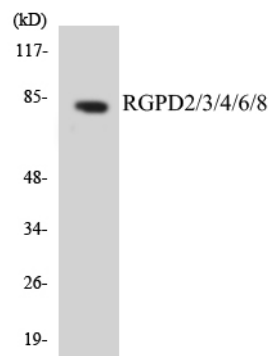
caution:The sequence shown here is derived from an Ensembl automatic analysis pipeline and should be considered as preliminary data.,miscellaneous:One of the 8 copies of RANBP2 clustered close to the centromere of chromosome 2.,miscellaneous:One of the 8 copies of RANBP2 clustered close to the chromosome 2 centromere.,similarity:Contains 1 GRIP domain.,similarity:Contains 2 RanBD1 domains.,similarity:Contains 2 TPR repeats.,similarity:Contains 3 TPR repeats.,tissue specificity:Expressed in testis.,caution:The sequence shown here is derived from an Ensembl automatic analysis pipeline and should be considered as preliminary data.,miscellaneous:One of the 8 copies of RANBP2 clustered close to the centromere of chromosome 2.,miscellaneous:One of the 8 copies of RANBP2 clustered close to the chromosome 2 centromere.,similarity:Contains 1 GRIP domain.,similarity:Contains 2 RanBD1 domains.,similarity:Contains 2 TPR repeats.,similarity:Contains 3 TPR repeats.,tissue specificity:Expressed in testis.,

Research Area

Image Data



Western blot analysis of RGP2/3/4/6/8 Antibody. The lane on the right is blocked with the RGP2/3/4/6/8 peptide.



Western blot analysis of the lysates from Jurkat cells using RGP2/3/4/6/8 antibody.



**Product Name: RGP2/3/4/6/8 Rabbit Polyclonal
Antibody**
Catalog #: APRab17084

Note

For research use only.