

Product Name: RGAG1 Rabbit Polyclonal Antibody
Catalog #: APRab17070



Summary

Production Name	RGAG1 Rabbit Polyclonal Antibody
Description	Rabbit Polyclonal Antibody
Host	Rabbit
Application	WB,ELISA
Reactivity	Human,Mouse

Performance

Conjugation	Unconjugated
Modification	Unmodified
Isotype	IgG
Clonality	Polyclonal
Form	Liquid
Storage	Store at 4°C short term. Aliquot and store at -20°C long term. Avoid freeze/thaw cycles.
Buffer	Liquid in PBS containing 50% glycerol, 0.5% BSA and 0.02% New type preservative N.
Purification	Affinity purification

Immunogen

Gene Name	RGAG1
Alternative Names	RGAG1; KIAA1318; Retrotransposon gag domain-containing protein 1; Tumor antigen BJ-HCC-23
Gene ID	57529.0
SwissProt ID	Q8NET4.The antiserum was produced against synthesized peptide derived from human RGAG1. AA range:1331-1380

Application

Dilution Ratio	WB 1:500-1:2000, ELISA 1:40000.Not yet tested in other applications.
Molecular Weight	144kDa

Product Name: RGAG1 Rabbit Polyclonal Antibody
Catalog #: AP Rab17070

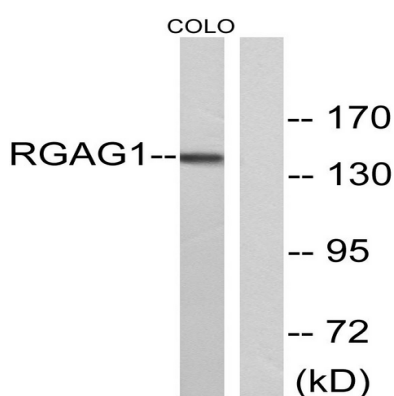


Background

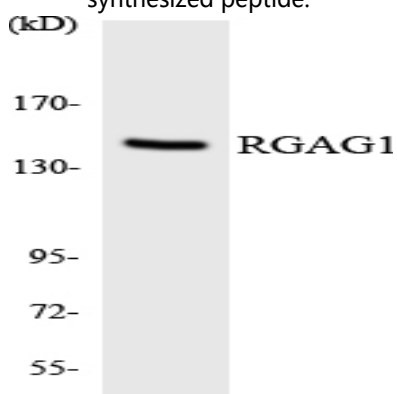
RGAG1 (Retrotransposon Gag Domain Containing 1) is a Protein Coding gene. Diseases associated with RGAG1 include non-syndromic x-linked intellectual disability.

Research Area

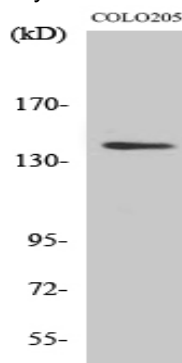
Image Data



Western blot analysis of lysates from COLO cells, using RGAG1 Antibody. The lane on the right is blocked with the synthesized peptide.



Western blot analysis of the lysates from HT-29 cells using RGAG1 antibody.



Product Name: RGAG1 Rabbit Polyclonal Antibody
Catalog #: APRab17070



Western Blot analysis of various cells using RGAG1 Polyclonal Antibody

Note

For research use only.