

Product Name: RFX3 Rabbit Polyclonal Antibody
Catalog #: APRab17066



Summary

Production Name	RFX3 Rabbit Polyclonal Antibody
Description	Rabbit Polyclonal Antibody
Host	Rabbit
Application	WB,IHC-P,IF-P,IF-F,ICC/IF,ELISA
Reactivity	Human,Mouse

Performance

Conjugation	Unconjugated
Modification	Unmodified
Isotype	IgG
Clonality	Polyclonal
Form	Liquid
Storage	Store at 4°C short term. Aliquot and store at -20°C long term. Avoid freeze/thaw cycles.
Buffer	Liquid in PBS containing 50% glycerol, 0.5% BSA and 0.02% New type preservative N.
Purification	Affinity purification

Immunogen

Gene Name	RFX3
Alternative Names	RFX3; Transcription factor RFX3; Regulatory factor X 3
Gene ID	5991.0
SwissProt ID	P48380.The antiserum was produced against synthesized peptide derived from human RFX3. AA range:641-690

Application

Dilution Ratio	WB 1:500-1:2000, IHC-P 1:100-1:300, ELISA 1:40000, IF-P/IF-F/ICC/IF 1:50-200
Molecular Weight	84kDa

Background

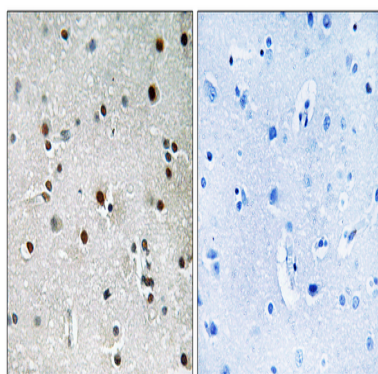
Product Name: RFX3 Rabbit Polyclonal Antibody
Catalog #: AP Rab17066



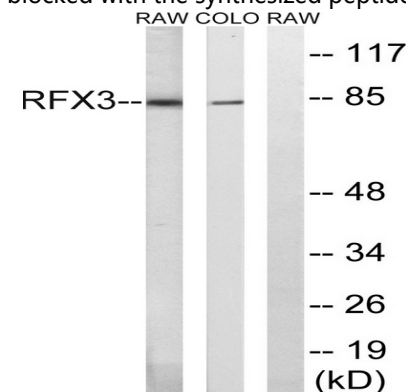
This gene is a member of the regulatory factor X gene family, which encodes transcription factors that contain a highly-conserved winged helix DNA binding domain. The protein encoded by this gene is structurally related to regulatory factors X1, X2, X4, and X5. It is a transcriptional activator that can bind DNA as a monomer or as a heterodimer with other RFX family members. Multiple transcript variants encoding different isoforms have been described for this gene. [provided by RefSeq, Aug 2013],function:Acts as a transcription factor. Represses transcription of MAP1A in non-neuronal cells but not in neuronal cells.,similarity:Belongs to the RFX family.,

Research Area

Image Data

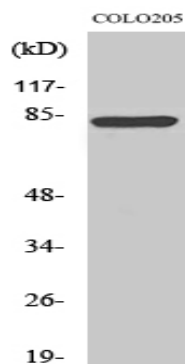


Immunohistochemistry analysis of paraffin-embedded human brain tissue, using RFX3 Antibody. The picture on the right is blocked with the synthesized peptide.



Western blot analysis of lysates from COLO and RAW264.7 cells, using RFX3 Antibody. The lane on the right is blocked with the synthesized peptide.

Product Name: RFX3 Rabbit Polyclonal Antibody
Catalog #: APRab17066



Western Blot analysis of various cells using RFX3 Polyclonal Antibody cells nucleus extracted by Minute TM Cytoplasmic and Nuclear Fractionation kit (SC-003, Invent biotech, MN, USA) .

Note

For research use only.