

## Summary

<b>Production Name</b>	RFC3 Rabbit Polyclonal Antibody
<b>Description</b>	Rabbit Polyclonal Antibody
<b>Host</b>	Rabbit
<b>Application</b>	WB,IHC-P,IF-P,IF-F,ICC/IF,ELISA
<b>Reactivity</b>	Human,Mouse,Rat

## Performance

<b>Conjugation</b>	Unconjugated
<b>Modification</b>	Unmodified
<b>Isotype</b>	IgG
<b>Clonality</b>	Polyclonal
<b>Form</b>	Liquid
<b>Storage</b>	Store at 4°C short term. Aliquot and store at -20°C long term. Avoid freeze/thaw cycles.
<b>Buffer</b>	Liquid in PBS containing 50% glycerol, 0.5% BSA and 0.02% New type preservative N.
<b>Purification</b>	Affinity purification

## Immunogen

<b>Gene Name</b>	RFC3
<b>Alternative Names</b>	RFC3; Replication factor C subunit 3; Activator 1 38 kDa subunit; A1 38 kDa subunit; Activator 1 subunit 3; Replication factor C 38 kDa subunit; RF-C 38 kDa subunit; RFC38
<b>Gene ID</b>	5983.0
<b>SwissProt ID</b>	P40938.The antiserum was produced against synthesized peptide derived from human RFC3. AA range:178-227

## Application

<b>Dilution Ratio</b>	WB 1:500-1:2000, IHC-P 1:100-1:300, ELISA 1:40000, IF-P/IF-F/ICC/IF 1:50-200
<b>Molecular Weight</b>	40kDa

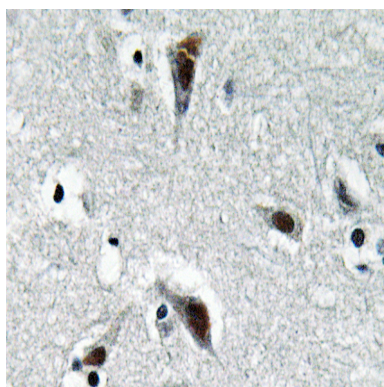
## Background

The elongation of primed DNA templates by DNA polymerase delta and DNA polymerase epsilon requires the accessory proteins proliferating cell nuclear antigen (PCNA) and replication factor C (RFC). RFC, also named activator 1, is a protein complex consisting of five distinct subunits of 140, 40, 38, 37, and 36 kDa. This gene encodes the 38 kDa subunit. This subunit is essential for the interaction between the 140 kDa subunit and the core complex that consists of the 36, 37, and 40 kDa subunits. Alternatively spliced transcript variants encoding distinct isoforms have been described. [provided by RefSeq, Jul 2008],function:The elongation of primed DNA templates by DNA polymerase delta and epsilon requires the action of the accessory proteins proliferating cell nuclear antigen (PCNA) and activator 1.,PTM:Phosphorylated upon DNA damage, probably by ATM or ATR.,similarity:Belongs to the activator 1 small subunits family.,subunit:Heterotetramer of subunits RFC2, RFC3, RFC4 and RFC5 that can form a complex either with RFC1 or with RAD17. The former interacts with PCNA in the presence of ATP, while the latter has ATPase activity but is not stimulated by PCNA.,

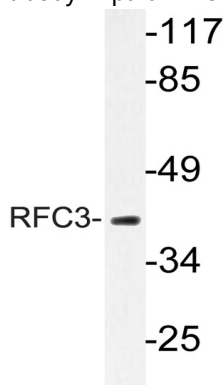
## Research Area

DNA replication;Nucleotide excision repair;Mismatch repair;

## Image Data

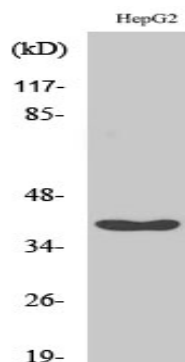


Immunohistochemistry analysis of RFC3 antibody in paraffin-embedded human brain tissue.



Western blot analysis of lysate from HepG2 cells, using RFC3 antibody.

**Product Name: RFC3 Rabbit Polyclonal Antibody**  
**Catalog #: APRab17050**



Western Blot analysis of various cells using RFC3 Polyclonal Antibody cells nucleus extracted by Minute TM Cytoplasmic and Nuclear Fractionation kit (SC-003, Invent biotech, MN, USA) .

#### **Note**

For research use only.