

Product Name: Repo-Man Rabbit Polyclonal Antibody
Catalog #: APRab17025



Summary

Production Name	Repo-Man Rabbit Polyclonal Antibody
Description	Rabbit Polyclonal Antibody
Host	Rabbit
Application	WB,IHC-P,IF-P,IF-F,ICC/IF,ELISA
Reactivity	Human

Performance

Conjugation	Unconjugated
Modification	Unmodified
Isotype	IgG
Clonality	Polyclonal
Form	Liquid
Storage	Store at 4°C short term. Aliquot and store at -20°C long term. Avoid freeze/thaw cycles.
Buffer	Liquid in PBS containing 50% glycerol, 0.5% BSA and 0.02% New type preservative N.
Purification	Affinity purification

Immunogen

Gene Name	CDCA2
Alternative Names	CDCA2; Cell division cycle-associated protein 2; Recruits PP1 onto mitotic chromatin at anaphase protein; Repo-Man
Gene ID	157313.0
SwissProt ID	Q69YH5.The antiserum was produced against synthesized peptide derived from human CDCA2. AA range:511-560

Application

Dilution Ratio	WB 1:500-1:2000, IHC-P 1:100-1:300, ELISA 1:5000, IF-P/IF-F/ICC/IF 1:50-200
Molecular Weight	120-130kDa

Product Name: Repo-Man Rabbit Polyclonal Antibody
Catalog #: APRab17025

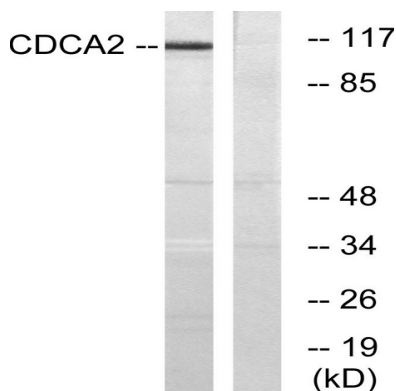


Background

cell division cycle associated 2(CDCA2) Homo sapiens This gene encodes a targeting subunit of the cell-cycle associated protein, protein phosphatase 1, with a role in targeting this protein to chromatin during anaphase. These two proteins comprise a phosphatase complex that is involved in nuclear envelope reformation and regulation of the DNA damage response. The encoded protein may also play a role in cancer progression. Alternative splicing results in multiple transcript variants. [provided by RefSeq, Dec 2015],function:Regulator of chromosome structure during mitosis required for condensin-depleted chromosomes to retain their compact architecture through anaphase. Acts by mediating the recruitment of phosphatase PP1-gamma subunit (PPP1CC) to chromatin at anaphase and into the following interphase. At anaphase onset, its association with chromatin targets a pool of PPP1CC to dephosphorylate substrates.,PTM:Phosphorylated by CDK1. May regulate its subcellular location.,subcellular location:Excluded from the nucleolus. Present in nucleoplasm throughout the G1, S and G2 stages of the cell cycle. During M phase, it becomes diffuse throughout the cell as the nuclear membrane breaks down, and faintly accumulates later on metaphase chromatin. As the cell progresses to anaphase, it accumulates on chromatin.,subunit:Interacts with PPP1CC.,tissue specificity:Ubiquitously expressed.,

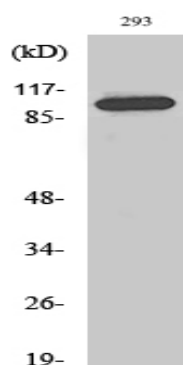
Research Area

Image Data



Western blot analysis of lysates from 293 cells, using CDCA2 Antibody. The lane on the right is blocked with the synthesized peptide.

Product Name: Repo-Man Rabbit Polyclonal Antibody
Catalog #: APRab17025



Western Blot analysis of various cells using Repo-Man Polyclonal Antibody diluted at 1: 2000 cells nucleus extracted by Minute TM Cytoplasmic and Nuclear Fractionation kit (SC-003, Invent biotech, MN, USA) .

Note

For research use only.