

Summary

Production Name	Repac Rabbit Polyclonal Antibody
Description	Rabbit Polyclonal Antibody
Host	Rabbit
Application	WB,IHC-P
Reactivity	Human,Mouse,Rat

Performance

Conjugation	Unconjugated
Modification	Unmodified
Isotype	IgG
Clonality	Polyclonal
Form	Liquid
Storage	Store at 4°C short term. Aliquot and store at -20°C long term. Avoid freeze/thaw cycles.
Buffer	Liquid in PBS containing 50% glycerol, 0.5% BSA and 0.02% New type preservative N.
Purification	Affinity purification

Immunogen

Gene Name	RAPGEF5 RAPGEF5; GFR; KIAA0277; MRGEF; Rap guanine nucleotide exchange factor 5; Guanine nucleotide exchange factor for Rap1; M-Ras-regulated Rap GEF; MR-GEF; Related to Epac; Repac
Alternative Names	
Gene ID	9771.0
SwissProt ID	Q92565.The antiserum was produced against synthesized peptide derived from human RAPGEF5. AA range:431-480

Application

Dilution Ratio	WB 1:500-2000, IHC-P 1:50-300
Molecular Weight	60kDa

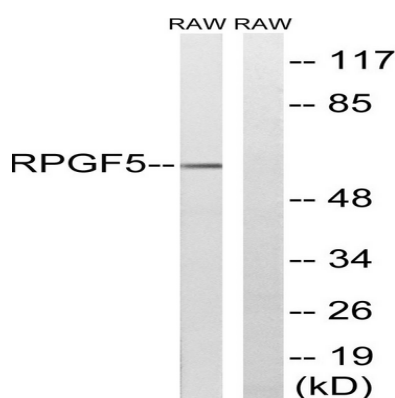
Background

Members of the RAS (see HRAS; MIM 190020) subfamily of GTPases function in signal transduction as GTP/GDP-regulated switches that cycle between inactive GDP- and active GTP-bound states. Guanine nucleotide exchange factors (GEFs), such as RAPGEF5, serve as RAS activators by promoting acquisition of GTP to maintain the active GTP-bound state and are the key link between cell surface receptors and RAS activation (Rebhun et al., 2000 [PubMed 10934204]).[supplied by OMIM, Mar 2008],function:Guanine nucleotide exchange factor (GEF) for RAP1A, RAP2A and MRAS/M-Ras-GTP. Its association with MRAS inhibits Rap1 activation.,similarity:Contains 1 N-terminal Ras-GEF domain.,similarity:Contains 1 Ras-GEF domain.,tissue specificity:Widely expressed with highest levels in brain.,

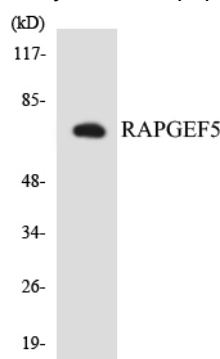
Research Area

Regulation of Actin Dynamics; AMPK

Image Data



Western blot analysis of lysates from RAW264.7 cells, using RAPGEF5 Antibody. The lane on the right is blocked with the synthesized peptide.



Western blot analysis of the lysates from COLO205 cells using RAPGEF5 antibody.

Product Name: Repac Rabbit Polyclonal Antibody
Catalog #: APRab17022



Note

For research use only.