

Product Name: RBAK Rabbit Polyclonal Antibody
Catalog #: APRab16942



Summary

Production Name	RBAK Rabbit Polyclonal Antibody
Description	Rabbit Polyclonal Antibody
Host	Rabbit
Application	WB,IF-P,IF-F,ICC/IF,ELISA,IHC-P
Reactivity	Human,Mouse

Performance

Conjugation	Unconjugated
Modification	Unmodified
Isotype	IgG
Clonality	Polyclonal
Form	Liquid
Storage	Store at 4°C short term. Aliquot and store at -20°C long term. Avoid freeze/thaw cycles.
Buffer	Liquid in PBS containing 50% glycerol, 0.5% BSA and 0.02% New type preservative N.
Purification	Affinity purification

Immunogen

Gene Name	RBAK
Alternative Names	RBAK; ZNF769; RB-associated KRAB zinc finger protein; RB-associated KRAB repressor; hRBaK; Zinc finger protein 769
Gene ID	57786.0
SwissProt ID	Q9NYW8.The antiserum was produced against synthesized peptide derived from human RBAK. AA range:1-50

Application

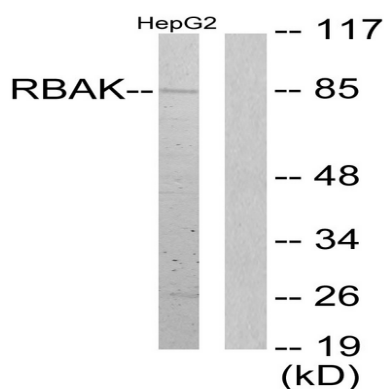
Dilution Ratio	WB 1:500-2000, IF-P/IF-F/ICC/IF/ICC 1:50-200, ELISA 1:2000-20000, IHC-P 1:50-200
Molecular Weight	85kDa

Background

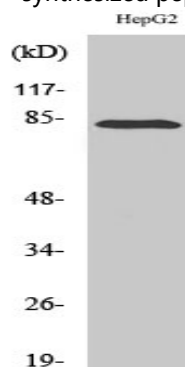
This gene encodes a nuclear protein which interacts with the tumor suppressor retinoblastoma 1. The two interacting proteins are thought to act as a transcriptional repressor for promoters which are activated by the E2F1 transcription factor. This protein contains a Kruppel-associated box (KRAB), which is a transcriptional repressor motif. Read-through transcripts that include exons from the downstream gene LOC389458 are expressed from this locus. [provided by RefSeq, Mar 2011],function:May repress E2F-dependent transcription. May promote AR-dependent transcription.,similarity:Belongs to the krueppel C2H2-type zinc-finger protein family.,similarity:Contains 1 KRAB domain.,similarity:Contains 16 C2H2-type zinc fingers.,subunit:Interacts with AR and RB1. May also interact with other nuclear hormone receptors such as NR3C1/GR.,tissue specificity:Expressed in bone, brain, heart, kidney, liver, lung, pancreas and placenta.,

Research Area

Image Data



Western blot analysis of lysates from HepG2 cells, using RBAK Antibody. The lane on the right is blocked with the synthesized peptide.



Western Blot analysis of various cells using RBAK Polyclonal Antibody cells nucleus extracted by Minute TM Cytoplasmic and Nuclear Fractionation kit (SC-003, Invent biotech, MN, USA) .

Product Name: RBAK Rabbit Polyclonal Antibody
Catalog #: APRab16942



Note

For research use only.