

Product Name: RB3 Rabbit Polyclonal Antibody
Catalog #: AP Rab16934



Summary

Production Name	RB3 Rabbit Polyclonal Antibody
Description	Rabbit Polyclonal Antibody
Host	Rabbit
Application	WB,IHC-P,IF-P,IF-F,ICC/IF,ELISA
Reactivity	Human,Mouse,Rat

Performance

Conjugation	Unconjugated
Modification	Unmodified
Isotype	IgG
Clonality	Polyclonal
Form	Liquid
Storage	Store at 4°C short term. Aliquot and store at -20°C long term. Avoid freeze/thaw cycles.
Buffer	Liquid in PBS containing 50% glycerol, 0.5% BSA and 0.02% New type preservative N.
Purification	Affinity purification

Immunogen

Gene Name	STMN4
Alternative Names	STMN4; Stathmin-4; Stathmin-like protein B3; RB3
Gene ID	81551.0
SwissProt ID	Q9H169. The antiserum was produced against synthesized peptide derived from human STMN4. AA range:140-189

Application

Dilution Ratio	WB 1:500-1:2000, IHC-P 1:100-1:300, ELISA 1:40000, IF-P/IF-F/ICC/IF 1:50-200
Molecular Weight	22kDa

Background

similarity:Belongs to the stathmin family.,similarity:Belongs to the stathmin family.,

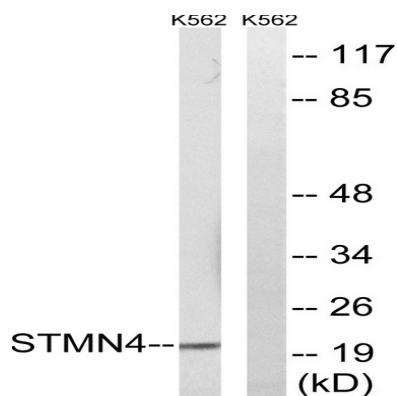
Product Name: RB3 Rabbit Polyclonal Antibody
Catalog #: APRab16934



Research Area

Regulation of Microtubule Dynamics

Image Data



Western blot analysis of lysates from K562 cells, using STMN4 Antibody. The lane on the right is blocked with the synthesized peptide.

Note

For research use only.