

Product Name: RASSF4 Rabbit Polyclonal Antibody
Catalog #: APRab16923



Summary

Production Name	RASSF4 Rabbit Polyclonal Antibody
Description	Rabbit Polyclonal Antibody
Host	Rabbit
Application	WB,ELISA
Reactivity	Human,Rat

Performance

Conjugation	Unconjugated
Modification	Unmodified
Isotype	IgG
Clonality	Polyclonal
Form	Liquid
Storage	Store at 4°C short term. Aliquot and store at -20°C long term. Avoid freeze/thaw cycles.
Buffer	Liquid in PBS containing 50% glycerol, 0.5% BSA and 0.02% New type preservative N.
Purification	Affinity purification

Immunogen

Gene Name	RASSF4
Alternative Names	RASSF4; AD037; Ras association domain-containing protein 4
Gene ID	83937.0
SwissProt ID	Q9H2L5.The antiserum was produced against synthesized peptide derived from human RASSF4. AA range:134-183

Application

Dilution Ratio	WB 1:500-1:2000, ELISA 1:10000.Not yet tested in other applications.
Molecular Weight	37kDa

Background

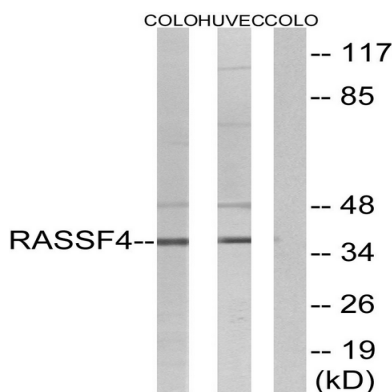
Product Name: RASSF4 Rabbit Polyclonal Antibody
Catalog #: AP Rab16923



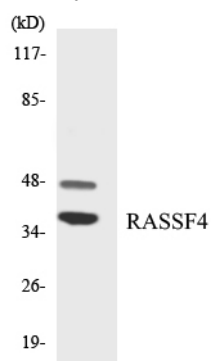
The function of this gene has not yet been determined but may involve a role in tumor suppression. Alternative splicing of this gene results in several transcript variants; however, most of the variants have not been fully described. [provided by RefSeq, Jul 2008],function:Potential tumor suppressor. May act as a KRAS effector protein. May promote apoptosis and cell cycle arrest.,similarity:Contains 1 Ras-associating domain.,similarity:Contains 1 SARAH domain.,subunit:Interacts directly with activated KRAS in a GTP-dependent manner.,tissue specificity:Widely expressed. Frequently down-regulated in tumor cell lines.,

Research Area

Image Data

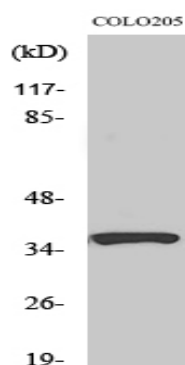


Western blot analysis of lysates from COLO and HUVEC cells, using RASSF4 Antibody. The lane on the right is blocked with the synthesized peptide.



Western blot analysis of the lysates from RAW264.7 cells using RASSF4 antibody.

Product Name: RASSF4 Rabbit Polyclonal Antibody
Catalog #: APRab16923



Western Blot analysis of various cells using RASSF4 Polyclonal Antibody

Note

For research use only.