

Product Name: Ras-GRF1 Rabbit Polyclonal Antibody
Catalog #: APRab16914



Summary

Production Name	Ras-GRF1 Rabbit Polyclonal Antibody
Description	Rabbit Polyclonal Antibody
Host	Rabbit
Application	IHC-P,IF-P,IF-F,ICC/IF,WB,ELISA
Reactivity	Mouse,Rat

Performance

Conjugation	Unconjugated
Modification	Unmodified
Isotype	IgG
Clonality	Polyclonal
Form	Liquid
Storage	Store at 4°C short term. Aliquot and store at -20°C long term. Avoid freeze/thaw cycles.
Buffer	Liquid in PBS containing 50% glycerol, 0.5% BSA and 0.02% New type preservative N.
Purification	Affinity purification

Immunogen

Gene Name	RASGRF1 RASGRF1; CDC25; GNRP; GRF1; Ras-specific guanine nucleotide-releasing factor 1; Ras-
Alternative Names	GRF1; Guanine nucleotide-releasing protein; GNRP; Ras-specific nucleotide exchange factor CDC25
Gene ID	192213.0
SwissProt ID	P28818. The antiserum was produced against synthesized peptide derived from human Ras-GRF1. AA range:882-931

Application

Dilution Ratio	WB 1:500-2000, IHC-P 1:100-1:300, ELISA 1:5000, IF-P/IF-F/ICC/IF 1:50-200
Molecular Weight	

Product Name: Ras-GRF1 Rabbit Polyclonal Antibody
Catalog #: AP Rab16914



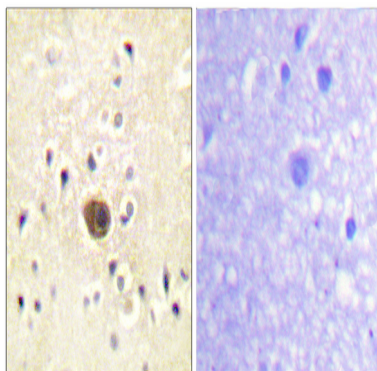
Background

RASGRF1 (Ras Protein Specific Guanine Nucleotide Releasing Factor 1) is a Protein Coding gene. Diseases associated with RASGRF1 include bleeding disorder, platelet-type, 18 and refractive error. Among its related pathways are Signaling by GPCR and Immune System. GO annotations related to this gene include guanyl-nucleotide exchange factor activity and Ras guanyl-nucleotide exchange factor activity. An important paralog of this gene is RALGDS. promotes the exchange of Ras-bound GDP by GTP.

Research Area

MAPK

Image Data



Immunohistochemistry analysis of paraffin-embedded human brain tissue, using Ras-GRF1 Antibody. The picture on the right is blocked with the synthesized peptide.

Note

For research use only.