

Product Name: Rap 2C Rabbit Polyclonal Antibody
Catalog #: APRab16890



Summary

Production Name	Rap 2C Rabbit Polyclonal Antibody
Description	Rabbit Polyclonal Antibody
Host	Rabbit
Application	WB,IHC-P
Reactivity	Human,Mouse

Performance

Conjugation	Unconjugated
Modification	Unmodified
Isotype	IgG
Clonality	Polyclonal
Form	Liquid
Storage	Store at 4°C short term. Aliquot and store at -20°C long term. Avoid freeze/thaw cycles.
Buffer	Liquid in PBS containing 50% glycerol, 0.5% BSA and 0.02% New type preservative N.
Purification	Affinity purification

Immunogen

Gene Name	RAP2C
Alternative Names	RAP2C; Ras-related protein Rap-2c
Gene ID	57826.0
SwissProt ID	Q9Y3L5.The antiserum was produced against synthesized peptide derived from human RAP2C. AA range:97-146

Application

Dilution Ratio	WB 1:500-2000, IHC-P 1:50-300
Molecular Weight	26kDa

Background

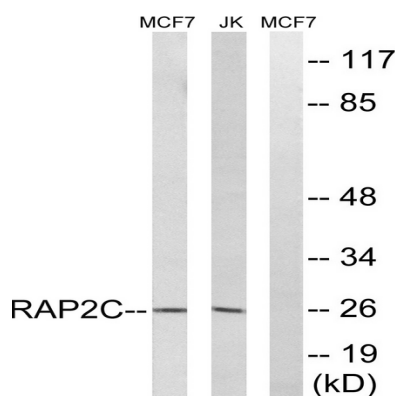
Product Name: Rap 2C Rabbit Polyclonal Antibody
Catalog #: AP Rab16890



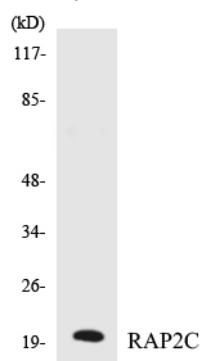
The protein encoded by this gene is a member of the Ras-related protein subfamily of the Ras GTPase superfamily. Members of this family are small GTPases that act as molecular switches to regulate cellular proliferation, differentiation, and apoptosis. This protein has been reported to activate in vitro transcriptional activity of the serum response element. Alternative splicing results in multiple transcript variants. [provided by RefSeq, Sep 2012], similarity: Belongs to the small GTPase superfamily. Ras family., tissue specificity: Expressed in mononuclear leukocytes and megakaryocytes. Not detected in platelets.,

Research Area

Image Data



Western blot analysis of lysates from Jurkat and MCF-7 cells, using RAP2C Antibody. The lane on the right is blocked with the synthesized peptide.



Western blot analysis of the lysates from K562 cells using RAP2C antibody.

Product Name: Rap 2C Rabbit Polyclonal Antibody
Catalog #: APRab16890



Western Blot analysis of various cells using Rap 2C Polyclonal Antibody diluted at 1 : 500

Note

For research use only.