

Product Name: Rap 2B Rabbit Polyclonal Antibody
Catalog #: APRab16889



Summary

Production Name	Rap 2B Rabbit Polyclonal Antibody
Description	Rabbit Polyclonal Antibody
Host	Rabbit
Application	WB,IHC-P
Reactivity	Human,Mouse,Rat

Performance

Conjugation	Unconjugated
Modification	Unmodified
Isotype	IgG
Clonality	Polyclonal
Form	Liquid
Storage	Store at 4°C short term. Aliquot and store at -20°C long term. Avoid freeze/thaw cycles.
Buffer	Liquid in PBS containing 50% glycerol, 0.5% BSA and 0.02% New type preservative N.
Purification	Affinity purification

Immunogen

Gene Name	RAP2B
Alternative Names	RAP2B; Ras-related protein Rap-2b
Gene ID	5912.0
SwissProt ID	P61225. The antiserum was produced against synthesized peptide derived from human RAP2B. AA range:98-147

Application

Dilution Ratio	WB 1:500-2000, IHC-P 1:50-300
Molecular Weight	18kDa

Background

This intronless gene belongs to a family of RAS-related genes. The proteins encoded by these genes share approximately

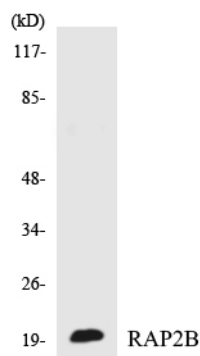
Product Name: Rap 2B Rabbit Polyclonal Antibody
Catalog #: AP Rab16889



50% amino acid identity with the classical RAS proteins and have numerous structural features in common. The most striking difference between the RAP and RAS proteins resides in their 61st amino acid: glutamine in RAS is replaced by threonine in RAP proteins. Evidence suggests that this protein may be polyisoprenylated and palmitoylated. [provided by RefSeq, Jul 2008],domain:The effector domain mediates the interaction with RUNDC3A.,similarity:Belongs to the small GTPase superfamily. Ras family.,subunit:Interacts with PLCE1. Interacts with SGSM1, SGSM2 and SGSM3. The GTP-bound form of RAP2B interacts with RUNDC3A.,

Research Area

Image Data



Western blot analysis of the lysates from COLO205 cells using RAP2B antibody.

Note

For research use only.