

Summary

Production Name	Raly Rabbit Polyclonal Antibody
Description	Rabbit Polyclonal Antibody
Host	Rabbit
Application	WB,IHC-P
Reactivity	Human,Mouse,Rat

Performance

Conjugation	Unconjugated
Modification	Unmodified
Isotype	IgG
Clonality	Polyclonal
Form	Liquid
Storage	Store at 4°C short term. Aliquot and store at -20°C long term. Avoid freeze/thaw cycles.
Buffer	Liquid in PBS containing 50% glycerol, 0.5% BSA and 0.02% New type preservative N.
Purification	Affinity purification

Immunogen

Gene Name	RALY
Alternative Names	RALY; HNRPCL2; P542; RNA-binding protein Raly; Autoantigen p542; Heterogeneous nuclear ribonucleoprotein C-like 2; hnRNP core protein C-like 2; hnRNP associated with lethal yellow protein homolog
Gene ID	22913.0
SwissProt ID	Q9UKM9.The antiserum was produced against synthesized peptide derived from human RALY. AA range:71-120

Application

Dilution Ratio	WB 1:500-2000, IHC-P 1:50-300
Molecular Weight	35kDa

Background

This gene encodes a member of the heterogeneous nuclear ribonucleoprotein (hnRNP) gene family. This protein may play a role in pre-mRNA splicing and in embryonic development. Alternate splicing results in multiple transcript variants.

[provided by RefSeq, Sep 2011],disease:Autoantigen found in infectious mononucleosis caused by Epstein-Barr virus. An epitope recognized by B-cells, which cross-react with the BKRF1 protein (EBNA-1 nuclear protein) of Epstein-Barr virus has been identified.,function:Probable-RNA binding protein. Could be a heterogeneous nuclear ribonucleoprotein (hnRNP).

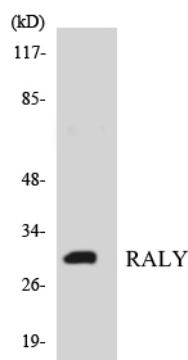
May be involved in pre-mRNA splicing.,PTM:Phosphorylated upon DNA damage, probably by ATM or

ATR.,similarity:Belongs to the RRM HNRPC family. RALY subfamily.,similarity:Contains 1 RRM (RNA recognition motif)

domain.,subunit:Identified in the spliceosome C complex, at least composed of AQR, ASCC3L1, C19orf29, CDC40, CDC5L, CRNKL1, DDX23, DDX41, DDX48, DDX5, DGCR14, DHX35, DHX38, DHX8, EFTUD2, FRG1, GPATC1, HNRPA1, HNRPA2B1, HNRPA3, HNRPC, HNRPF, HNRPH1, HNRPK, HNRPM, HNRPR, HNRPU, KIAA1160, KIAA1604, LSM2, LSM3, MAGOH, MORG1, PABPC1, PLRG1, PNN, PPIE, PPIL1, PPIL3, PPWD1, PRPF19, PRPF4B, PRPF6, PRPF8, RALY, RBM22, RBM8A, RBMX, SART1, SF3A1, SF3A2, SF3A3, SF3B1, SF3B2, SF3B3, SFRS1, SKIV2L2, SNRPA1, SNRPB, SNRPB2, SNRPD1, SNRPD2, SNRPD3, SNRPE, SNRPF, SNRPG, SNW1, SRRM1, SRRM2, SYF2, SYNCRIP, TFIP11, THOC4, U2AF1, WDR57, XAB2 and ZCCHC8.,tissue specificity:Expressed in heart, brain, lung, liver, skeletal muscle, kidney and pancreas. Weakly expressed in placenta.,

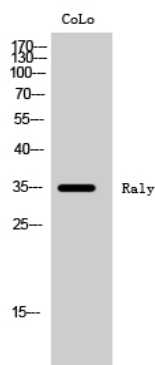
Research Area

Image Data



Western blot analysis of the lysates from HT-29 cells using RALY antibody.

Product Name: Raly Rabbit Polyclonal Antibody
Catalog #: APRab16873



Western Blot analysis of CoLo cells using Raly Polyclonal Antibody cells nucleus extracted by Minute TM Cytoplasmic and Nuclear Fractionation kit (SC-003, Invent biotech, MN, USA) .

Note

For research use only.