

Summary

Production Name	Rad52 Rabbit Polyclonal Antibody
Description	Rabbit Polyclonal Antibody
Host	Rabbit
Application	WB,IHC-P,IF-P,IF-F,ICC/IF,ELISA
Reactivity	Human,Mouse

Performance

Conjugation	Unconjugated
Modification	Unmodified
Isotype	IgG
Clonality	Polyclonal
Form	Liquid
Storage	Store at 4°C short term. Aliquot and store at -20°C long term. Avoid freeze/thaw cycles.
Buffer	Liquid in PBS containing 50% glycerol, 0.5% BSA and 0.02% New type preservative N.
Purification	Affinity purification

Immunogen

Gene Name	RAD52
Alternative Names	RAD52; DNA repair protein RAD52 homolog
Gene ID	5893.0
SwissProt ID	P43351.The antiserum was produced against synthesized peptide derived from human RAD52. AA range:70-119

Application

Dilution Ratio	WB 1:500-1:2000, IHC-P 1:100-1:300, IF-P/IF-F/ICC/IF 1:200-1:1000, ELISA 1:10000.Not yet tested in other applications.
Molecular Weight	46kDa

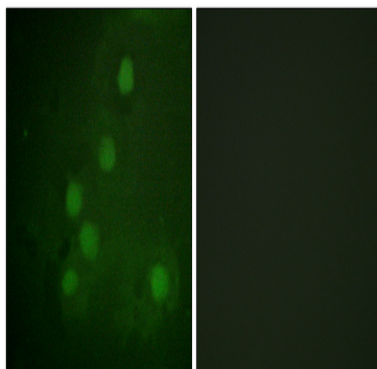
Background

The protein encoded by this gene shares similarity with *Saccharomyces cerevisiae* Rad52, a protein important for DNA double-strand break repair and homologous recombination. This gene product was shown to bind single-stranded DNA ends, and mediate the DNA-DNA interaction necessary for the annealing of complementary DNA strands. It was also found to interact with DNA recombination protein RAD51, which suggested its role in RAD51 related DNA recombination and repair. A pseudogene of this gene is present on chromosome 2. Alternative splicing results in multiple transcript variants. Additional alternatively spliced transcript variants of this gene have been described, but their full-length nature is not known. [provided by RefSeq, Jul 2014],function:Involved in double-stranded break repair. Plays a central role in genetic recombination and DNA repair by promoting the annealing of complementary single-stranded DNA and by stimulation of the RAD51 recombinase.,PTM:Phosphorylated upon DNA damage, probably by ATM or ATR.,similarity:Belongs to the RAD52 family.,subunit:Forms a undecameric ring.,

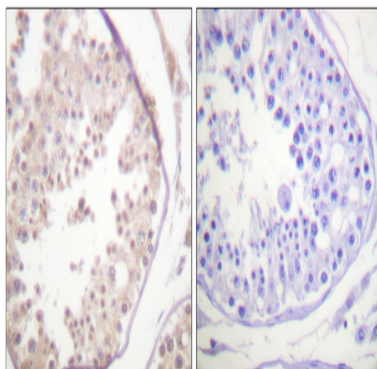
Research Area

Homologous recombination;

Image Data



Immunofluorescence analysis of COS7 cells, using RAD52 Antibody. The picture on the right is blocked with the synthesized peptide.

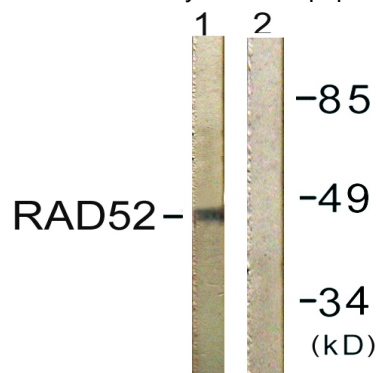


Immunohistochemistry analysis of paraffin-embedded human testis tissue, using RAD52 Antibody. The picture on the right is

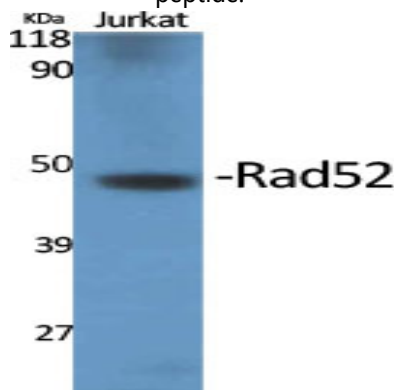
Product Name: Rad52 Rabbit Polyclonal Antibody
Catalog #: APRab16848



blocked with the synthesized peptide.



Western blot analysis of lysates from 293 cells, using RAD52 Antibody. The lane on the right is blocked with the synthesized peptide.



Western Blot analysis of various cells using Rad52 Polyclonal Antibody cells nucleus extracted by Minute TM Cytoplasmic and Nuclear Fractionation kit (SC-003, Inventbiotech, MN, USA) .



Western Blot analysis of 293 cells using Rad52 Polyclonal Antibody cells nucleus extracted by Minute TM Cytoplasmic and Nuclear Fractionation kit (SC-003, Inventbiotech, MN, USA) .

Note

For research use only.