

Product Name: Rabaptin-5 β Rabbit Polyclonal Antibody
Catalog #: APRab16810



Summary

Production Name	Rabaptin-5 β Rabbit Polyclonal Antibody
Description	Rabbit Polyclonal Antibody
Host	Rabbit
Application	WB,IHC-P,IF-P,IF-F,ICC/IF,ELISA
Reactivity	Human,Mouse,Rat

Performance

Conjugation	Unconjugated
Modification	Unmodified
Isotype	IgG
Clonality	Polyclonal
Form	Liquid
Storage	Store at 4°C short term. Aliquot and store at -20°C long term. Avoid freeze/thaw cycles.
Buffer	Liquid in PBS containing 50% glycerol, 0.5% BSA and 0.02% New type preservative N.
Purification	Affinity purification

Immunogen

Gene Name	RABEP2
Alternative Names	RABEP2; RABPT5B; Rab GTPase-binding effector protein 2; Rabaptin-5beta
Gene ID	79874.0
SwissProt ID	Q9H5N1.The antiserum was produced against synthesized peptide derived from human RABEP2. AA range:353-402

Application

Dilution Ratio	WB 1:500-1:2000, IHC-P 1:100-1:300, ELISA 1:10000, IF-P/IF-F/ICC/IF 1:50-200
Molecular Weight	64kDa

Background

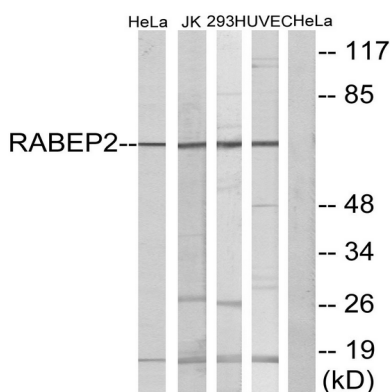
Product Name: Rabaptin-5 β Rabbit Polyclonal Antibody
Catalog #: APRab16810



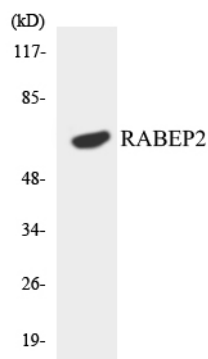
function: Plays a role in membrane trafficking and in homotypic early endosome fusion., similarity: Belongs to the rabaptin family., subunit: Heterodimer with RABGEF1. The dimer binds RAB5A that has been activated by GTP-binding., function: Plays a role in membrane trafficking and in homotypic early endosome fusion., similarity: Belongs to the rabaptin family., subunit: Heterodimer with RABGEF1. The dimer binds RAB5A that has been activated by GTP-binding.,

Research Area

Image Data

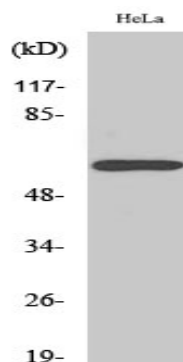


Western blot analysis of lysates from HeLa, Jurkat, 293, and HUVEC cells, using RABEP2 Antibody. The lane on the right is blocked with the synthesized peptide.

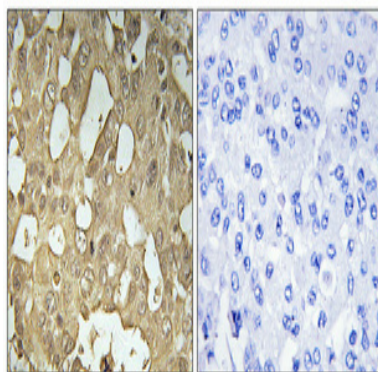


Western blot analysis of the lysates from HeLa cells using RABEP2 antibody.

Product Name: Rabaptin-5 β Rabbit Polyclonal Antibody
Catalog #: APRab16810



Western Blot analysis of various cells using Rabaptin-5 β Polyclonal Antibody



Immunohistochemical analysis of paraffin-embedded Human breast cancer. Antibody was diluted at 1:100 (4 $^{\circ}$,overnight) . High-pressure and temperature Tris-EDTA,pH8.0 was used for antigen retrieval. Negative contrl (right) obtaned from antibody was pre-absorbed by immunogen peptide.

Note

For research use only.