

**Product Name: RAB3IP Rabbit Polyclonal Antibody**  
**Catalog #: APRab16788**



## Summary

<b>Production Name</b>	RAB3IP Rabbit Polyclonal Antibody
<b>Description</b>	Rabbit Polyclonal Antibody
<b>Host</b>	Rabbit
<b>Application</b>	WB,IHC-P,IF-P,IF-F,ICC/IF,ELISA
<b>Reactivity</b>	Human,Mouse,Rat

## Performance

<b>Conjugation</b>	Unconjugated
<b>Modification</b>	Unmodified
<b>Isotype</b>	IgG
<b>Clonality</b>	Polyclonal
<b>Form</b>	Liquid
<b>Storage</b>	Store at 4°C short term. Aliquot and store at -20°C long term. Avoid freeze/thaw cycles.
<b>Buffer</b>	Liquid in PBS containing 50% glycerol, 0.5% BSA and 0.02% New type preservative N.
<b>Purification</b>	Affinity purification

## Immunogen

<b>Gene Name</b>	RAB3IP
<b>Alternative Names</b>	RAB3IP; RABIN8; Rab-3A-interacting protein; Rab3A-interacting protein; Rabin-3; SSX2-interacting protein
<b>Gene ID</b>	117177.0
<b>SwissProt ID</b>	Q96QF0.The antiserum was produced against synthesized peptide derived from human RAB3IP. AA range:257-306

## Application

<b>Dilution Ratio</b>	WB 1:500-1:2000, IHC-P 1:100-1:300, ELISA 1:40000, IF-P/IF-F/ICC/IF 1:50-200
<b>Molecular Weight</b>	53kDa

**Product Name: RAB3IP Rabbit Polyclonal Antibody**  
**Catalog #: APRab16788**

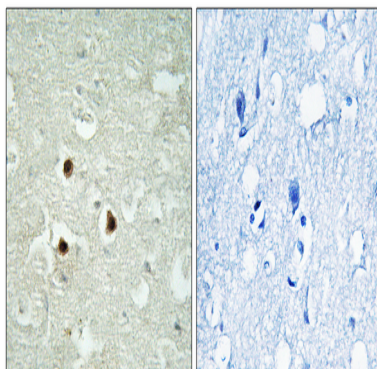


## Background

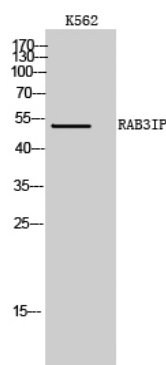
similarity:Belongs to the SEC2 family.,subcellular location:Predominantly cytoplasmic but a small proportion colocalizes with SSX2 in the nucleus.,subunit:Interacts with the N-terminal region of SSX2. Interacts with RAB3A and RAB3D.,tissue specificity:Expressed in brain, kidney, heart, pancreas and placenta. Not detected in skeletal muscle or liver.,similarity:Belongs to the SEC2 family.,subcellular location:Predominantly cytoplasmic but a small proportion colocalizes with SSX2 in the nucleus.,subunit:Interacts with the N-terminal region of SSX2. Interacts with RAB3A and RAB3D.,tissue specificity:Expressed in brain, kidney, heart, pancreas and placenta. Not detected in skeletal muscle or liver.,

## Research Area

## Image Data



Immunohistochemistry analysis of paraffin-embedded human brain tissue, using RAB3IP Antibody. The picture on the right is blocked with the synthesized peptide.



Western Blot analysis of K562 cells using RAB3IP Polyclonal Antibody

## Note

For research use only.