

Product Name: Rab11-FIP3 Rabbit Polyclonal Antibody
Catalog #: AP Rab16770



Summary

Production Name	Rab11-FIP3 Rabbit Polyclonal Antibody
Description	Rabbit Polyclonal Antibody
Host	Rabbit
Application	IHC-P,IF-P,IF-F,ICC/IF,ELISA
Reactivity	Human,Mouse,Rat

Performance

Conjugation	Unconjugated
Modification	Unmodified
Isotype	IgG
Clonality	Polyclonal
Form	Liquid
Storage	Store at 4°C short term. Aliquot and store at -20°C long term. Avoid freeze/thaw cycles.
Buffer	Liquid in PBS containing 50% glycerol, 0.5% BSA and 0.02% New type preservative N.
Purification	Affinity purification

Immunogen

Gene Name	RAB11FIP3
Alternative Names	RAB11FIP3; ARFO1; KIAA0665; Rab11 family-interacting protein 3; FIP3-Rab11; Rab11-FIP3; Arfophilin-1; EF hands-containing Rab-interacting protein; Eferin; MU-MB-17.148
Gene ID	9727.0
SwissProt ID	O75154. The antiserum was produced against synthesized peptide derived from human RAB11FIP3. AA range:569-618

Application

Dilution Ratio	IHC-P 1:100-1:300, ELISA 1:10000, IF-P/IF-F/ICC/IF 1:50-200
Molecular Weight	

Background

Product Name: Rab11-FIP3 Rabbit Polyclonal Antibody
Catalog #: AP Rab16770

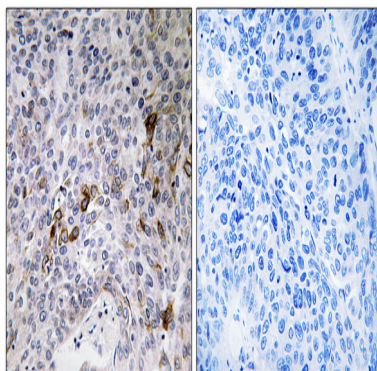


Proteins of the large Rab GTPase family (see RAB1A; MIM 179508) have regulatory roles in the formation, targeting, and fusion of intracellular transport vesicles. RAB11FIP3 is one of many proteins that interact with and regulate Rab GTPases (Hales et al., 2001 [PubMed 11495908]).[supplied by OMIM, Mar 2008],similarity:Contains 2 EF-hand domains.,subcellular location:Colocalizes with RAB11A at recycling endosomes.,subunit:Forms an heterooligomeric complex with RAB11FIP4. Binds to RAB11A, RAB11B and RAB25.,

Research Area

Endocytosis;

Image Data



Immunohistochemistry analysis of paraffin-embedded human lung carcinoma tissue, using RAB11FIP3 Antibody. The picture on the right is blocked with the synthesized peptide.

Note

For research use only.