

**Product Name: Rab11-FIP2 Rabbit Polyclonal Antibody**  
**Catalog #: AP Rab16769**



## Summary

|                        |                                       |
|------------------------|---------------------------------------|
| <b>Production Name</b> | Rab11-FIP2 Rabbit Polyclonal Antibody |
| <b>Description</b>     | Rabbit Polyclonal Antibody            |
| <b>Host</b>            | Rabbit                                |
| <b>Application</b>     | WB,ELISA,IHC-P                        |
| <b>Reactivity</b>      | Human,Mouse                           |

## Performance

|                     |  |
|---------------------|--|
| <b>Conjugation</b>  | Unconjugated   |
| <b>Modification</b> | Unmodified   |
| <b>Isotype</b>      | IgG  |
| <b>Clonality</b>    | Polyclonal   |
| <b>Form</b>         | Liquid   |
| <b>Storage</b>      | Store at 4°C short term. Aliquot and store at -20°C long term. Avoid freeze/thaw cycles. |
| <b>Buffer</b>       | Liquid in PBS containing 50% glycerol, 0.5% BSA and 0.02% New type preservative N.       |
| <b>Purification</b> | Affinity purification  |

## Immunogen

|                          |  |
|--------------------------|--|
| <b>Gene Name</b>         | RAB11FIP2  |
| <b>Alternative Names</b> | RAB11FIP2; KIAA0941; Rab11 family-interacting protein 2; Rab11-FIP2; NRip11                                  |
| <b>Gene ID</b>           | 22841.0  |
| <b>SwissProt ID</b>      | Q7L804.The antiserum was produced against synthesized peptide derived from human RAB11FIP2. AA range:340-389 |

## Application

|                         |   |
|-------------------------|---|
| <b>Dilution Ratio</b>   | WB 1:500-2000, IHC-P 1:50-300, ELISA 2000-20000 |
| <b>Molecular Weight</b> | 58kDa   |

## Background

**Product Name: Rab11-FIP2 Rabbit Polyclonal Antibody**  
**Catalog #: AP Rab16769**

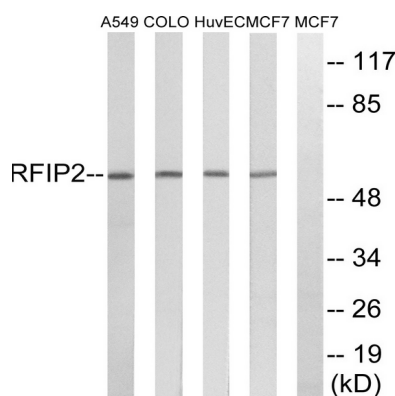


function: A Rab11 effector protein acting in the regulation of the transport of vesicles from the endosomal recycling compartment (ERC) to the plasma membrane. Also involved in receptor-mediated endocytosis and membrane trafficking of recycling endosomes, probably originating from clathrin-coated vesicles. Binds preferentially to phosphatidylinositol 3,4,5-trisphosphate (PtdInsP3) and phosphatidic acid (PA)., similarity: Contains 1 C2 domain., subcellular location: Translocates with RAB11A from the vesicles of the endocytic recycling compartment (ERC) to the plasma membrane., subunit: Homooligomerizes in a Rab11-independent manner. Forms an heterooligomeric complex with RAB11FIP4. Interacts with AP2A1, MYO5B, RAB11A, RAB11B, RAB25 and REPS1. Interacts with RAB11A/RAB11B that has been activated by GTP binding., function: A Rab11 effector protein acting in the regulation of the transport of vesicles from the endosomal recycling compartment (ERC) to the plasma membrane. Also involved in receptor-mediated endocytosis and membrane trafficking of recycling endosomes, probably originating from clathrin-coated vesicles. Binds preferentially to phosphatidylinositol 3,4,5-trisphosphate (PtdInsP3) and phosphatidic acid (PA)., similarity: Contains 1 C2 domain., subcellular location: Translocates with RAB11A from the vesicles of the endocytic recycling compartment (ERC) to the plasma membrane., subunit: Homooligomerizes in a Rab11-independent manner. Forms an heterooligomeric complex with RAB11FIP4. Interacts with AP2A1, MYO5B, RAB11A, RAB11B, RAB25 and REPS1. Interacts with RAB11A/RAB11B that has been activated by GTP binding.,

## Research Area

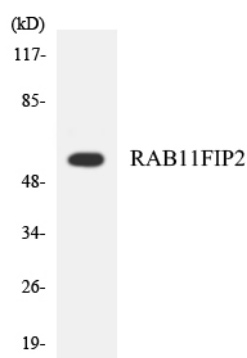
Endocytosis;

## Image Data

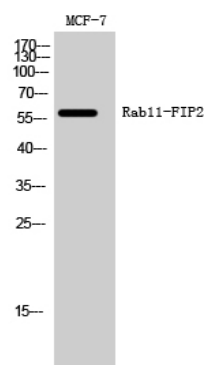


Western blot analysis of lysates from MCF-7, HUVEC, A549, and COLO cells, using RAB11FIP2 Antibody. The lane on the right is blocked with the synthesized peptide.

**Product Name: Rab11-FIP2 Rabbit Polyclonal Antibody**  
**Catalog #: APRab16769**



Western blot analysis of the lysates from HepG2 cells using RAB11FIP2 antibody.



Western Blot analysis of MCF-7 cells using Rab11-FIP2 Polyclonal Antibody

## Note

For research use only.