

**Product Name: Rab 7L1 Rabbit Polyclonal Antibody**  
**Catalog #: AP Rab16763**



## Summary

<b>Production Name</b>	Rab 7L1 Rabbit Polyclonal Antibody
<b>Description</b>	Rabbit Polyclonal Antibody
<b>Host</b>	Rabbit
<b>Application</b>	WB,ELISA,IHC-P
<b>Reactivity</b>	Human,Mouse,Rat

## Performance

<b>Conjugation</b>	Unconjugated
<b>Modification</b>	Unmodified
<b>Isotype</b>	IgG
<b>Clonality</b>	Polyclonal
<b>Form</b>	Liquid
<b>Storage</b>	Store at 4°C short term. Aliquot and store at -20°C long term. Avoid freeze/thaw cycles.
<b>Buffer</b>	Liquid in PBS containing 50% glycerol, 0.5% BSA and 0.02% New type preservative N.
<b>Purification</b>	Affinity purification

## Immunogen

<b>Gene Name</b>	RAB7L1
<b>Alternative Names</b>	RAB7L1; Ras-related protein Rab-7L1; Rab-7-like protein 1
<b>Gene ID</b>	8934.0
<b>SwissProt ID</b>	O14966.The antiserum was produced against synthesized peptide derived from human RAB7L1. AA range:115-164

## Application

<b>Dilution Ratio</b>	WB 1:500-2000, IHC-P 1:50-300, ELISA 2000-20000
<b>Molecular Weight</b>	28kDa

## Background

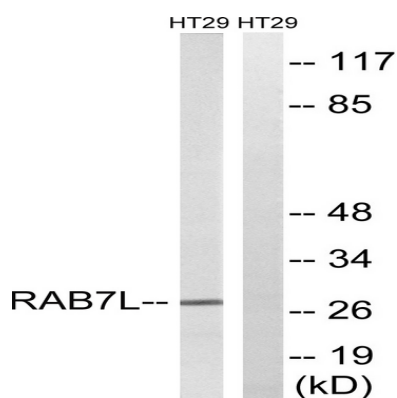
**Product Name: Rab 7L1 Rabbit Polyclonal Antibody**  
**Catalog #: AP Rab16763**



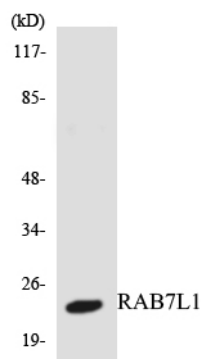
similarity:Belongs to the small GTPase superfamily. Rab family.,tissue specificity:Ubiquitous.,similarity:Belongs to the small GTPase superfamily. Rab family.,tissue specificity:Ubiquitous.,

## Research Area

## Image Data



Western blot analysis of lysates from HT-29 cells, using RAB7L1 Antibody. The lane on the right is blocked with the synthesized peptide.



Western blot analysis of the lysates from HepG2 cells using RAB7L1 antibody.



Western Blot analysis of various cells using Rab 7L1 Polyclonal Antibody

**Product Name: Rab 7L1 Rabbit Polyclonal Antibody**  
**Catalog #: APRab16763**

---



**Note**

For research use only.