

Product Name: Rab 6C Rabbit Polyclonal Antibody
Catalog #: AP Rab16762



Summary

Production Name	Rab 6C Rabbit Polyclonal Antibody
Description	Rabbit Polyclonal Antibody
Host	Rabbit
Application	WB, IHC-P
Reactivity	Human, Mouse, Rat

Performance

Conjugation	Unconjugated
Modification	Unmodified
Isotype	IgG
Clonality	Polyclonal
Form	Liquid
Storage	Store at 4°C short term. Aliquot and store at -20°C long term. Avoid freeze/thaw cycles.
Buffer	Liquid in PBS containing 50% glycerol, 0.5% BSA and 0.02% New type preservative N.
Purification	Affinity purification

Immunogen

Gene Name	RAB6C
Alternative Names	RAB6C; WTH3; Ras-related protein Rab-6C; Rab6-like protein WTH3
Gene ID	84084.0
SwissProt ID	Q9H0N0. The antiserum was produced against synthesized peptide derived from human RAB6C. AA range: 165-214

Application

Dilution Ratio	WB 1:500-2000, IHC-P 1:50-300
Molecular Weight	28kDa

Background

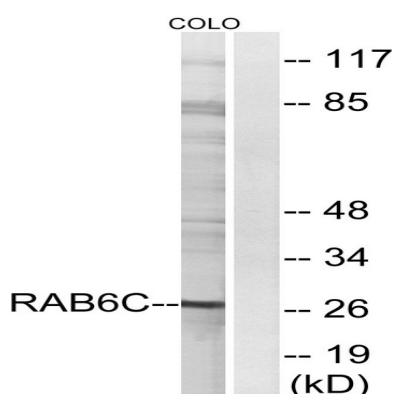
Product Name: Rab 6C Rabbit Polyclonal Antibody
Catalog #: AP Rab16762



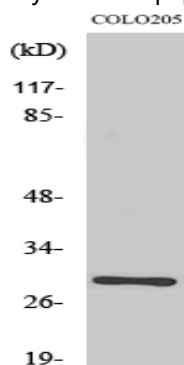
function:Protein transport. Regulator of membrane traffic from the Golgi apparatus towards the endoplasmic reticulum (ER). Has a low GTPase activity.,PTM:Phosphorylated upon DNA damage, probably by ATM or ATR.,similarity:Belongs to the small GTPase superfamily. Rab family.,subunit:Interacts with SCYL1BP1. Interacts with VSP52 and RABGAP1. Isoform 1 interacts with RAB6KIFL but not isoform 2. Isoforms 1 and 2 interact with BICD1 and BICD2. Interacts with TMF1.,tissue specificity:Ubiquitous.,function:Protein transport. Regulator of membrane traffic from the Golgi apparatus towards the endoplasmic reticulum (ER). Has a low GTPase activity.,PTM:Phosphorylated upon DNA damage, probably by ATM or ATR.,similarity:Belongs to the small GTPase superfamily. Rab family.,subunit:Interacts with SCYL1BP1. Interacts with VSP52 and RABGAP1. Isoform 1 interacts with RAB6KIFL but not isoform 2. Isoforms 1 and 2 interact with BICD1 and BICD2. Interacts with TMF1.,tissue specificity:Ubiquitous.,

Research Area

Image Data



Western blot analysis of lysates from COLO cells, using RAB6C Antibody. The lane on the right is blocked with the synthesized peptide.



Western Blot analysis of various cells using Rab 6C Polyclonal Antibody

Product Name: Rab 6C Rabbit Polyclonal Antibody
Catalog #: APRab16762



Note

For research use only.