

Summary

Production Name	Rab 5C Rabbit Polyclonal Antibody
Description	Rabbit Polyclonal Antibody
Host	Rabbit
Application	WB,IHC-P,IF-P,IF-F,ICC/IF,ELISA
Reactivity	Human,Mouse,Rat

Performance

Conjugation	Unconjugated
Modification	Unmodified
Isotype	IgG
Clonality	Polyclonal
Form	Liquid
Storage	Store at 4°C short term. Aliquot and store at -20°C long term. Avoid freeze/thaw cycles.
Buffer	Liquid in PBS containing 50% glycerol, 0.5% BSA and 0.02% New type preservative N.
Purification	Affinity purification

Immunogen

Gene Name	RAB5C
Alternative Names	RAB5C; RABL; Ras-related protein Rab-5C; L1880; RAB5L
Gene ID	5878.0
SwissProt ID	P51148.The antiserum was produced against synthesized peptide derived from human RAB5C. AA range:122-171

Application

Dilution Ratio	WB 1:500-1:2000, IHC-P 1:100-1:300, ELISA 1:5000, IF-P/IF-F/ICC/IF 1:50-200
Molecular Weight	30kDa

Background

Product Name: Rab 5C Rabbit Polyclonal Antibody
Catalog #: AP Rab16760

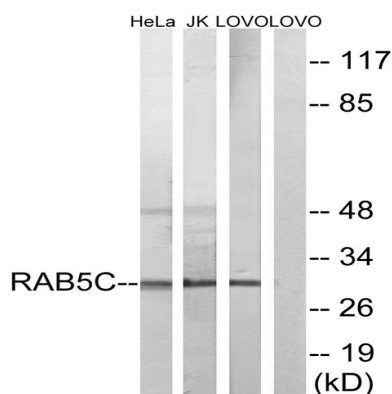


Members of the Rab protein family are small GTPases of the Ras superfamily that are thought to ensure fidelity in the process of docking and/or fusion of vesicles with their correct acceptor compartment (Han et al., 1996 [PubMed 8646882]). [supplied by OMIM, Nov 2010],function:Protein transport. Probably involved in vesicular traffic.,similarity:Belongs to the small GTPase superfamily. Rab family.,subcellular location:Identified by mass spectrometry in melanosome fractions from stage I to stage IV.,subunit:Binds EEA1.,

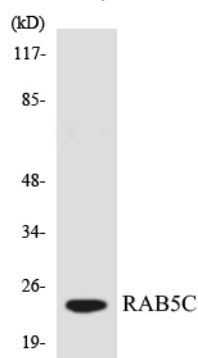
Research Area

Endocytosis;

Image Data



Western blot analysis of lysates from LOVO, HeLa, and Jurkat cells, using RAB5C Antibody. The lane on the right is blocked with the synthesized peptide.



Western blot analysis of the lysates from 293 cells using RAB5C antibody.

Note

For research use only.