

Product Name: Rab 41 Rabbit Polyclonal Antibody
Catalog #: AP Rab16758



Summary

| | |
|------------------------|-----------------------------------|
| Production Name | Rab 41 Rabbit Polyclonal Antibody |
| Description | Rabbit Polyclonal Antibody |
| Host | Rabbit |
| Application | IHC-P,IF-P,IF-F,ICC/IF,ELISA |
| Reactivity | Human,Rat,Mouse |

Performance

| | |
|---------------------|--|
| Conjugation | Unconjugated |
| Modification | Unmodified |
| Isotype | IgG |
| Clonality | Polyclonal |
| Form | Liquid |
| Storage | Store at 4°C short term. Aliquot and store at -20°C long term. Avoid freeze/thaw cycles. |
| Buffer | Liquid in PBS containing 50% glycerol, 0.5% BSA and 0.02% New type preservative N. |
| Purification | Affinity purification |

Immunogen

| | |
|--------------------------|---|
| Gene Name | RAB41 |
| Alternative Names | RAB41; Ras-related protein Rab-41 |
| Gene ID | 347517.0 |
| SwissProt ID | Q5JT25. The antiserum was produced against synthesized peptide derived from human RAB41. AA range:115-164 |

Application

| | |
|-------------------------|---|
| Dilution Ratio | IHC-P 1:100-1:300, ELISA 1:20000, IF-P/IF-F/ICC/IF 1:50-200 |
| Molecular Weight | |

Background

This gene encodes a small GTP-binding protein that belongs to the largest family within the Ras superfamily. These

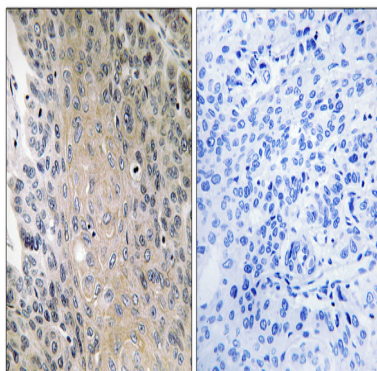
Product Name: Rab 41 Rabbit Polyclonal Antibody
Catalog #: APRab16758



proteins function as regulators of membrane trafficking. They cycle between inactive GDP-bound and activated GTP-bound states, which is controlled by GTP hydrolysis-activating proteins (GAPs). This family member can be activated by the GAP protein RN-Tre, and it is localized to the Golgi complex. [provided by RefSeq, May 2010],similarity:Belongs to the small GTPase superfamily. Rab family.,

Research Area

Image Data



Immunohistochemistry analysis of paraffin-embedded human lung carcinoma, using RAB41 Antibody. The picture on the right is blocked with the synthesized peptide.

Note

For research use only.