

Product Name: Rab 1B Rabbit Polyclonal Antibody
Catalog #: AP Rab16743



Summary

Production Name	Rab 1B Rabbit Polyclonal Antibody
Description	Rabbit Polyclonal Antibody
Host	Rabbit
Application	WB,ELISA,IHC-P
Reactivity	Human,Mouse,Rat

Performance

Conjugation	Unconjugated
Modification	Unmodified
Isotype	IgG
Clonality	Polyclonal
Form	Liquid
Storage	Store at 4°C short term. Aliquot and store at -20°C long term. Avoid freeze/thaw cycles.
Buffer	Liquid in PBS containing 50% glycerol, 0.5% BSA and 0.02% New type preservative N.
Purification	Affinity purification

Immunogen

Gene Name	RAB1B
Alternative Names	RAB1B; Ras-related protein Rab-1B
Gene ID	81876.0
SwissProt ID	Q9H0U4.Synthesized peptide derived from Rab 1B . at AA range: 50-130

Application

Dilution Ratio	WB 1:500-2000, IHC-P 1:50-300, ELISA 2000-20000
Molecular Weight	22kDa

Background

Members of the RAB protein family, such as RAB1B, are low molecular mass monomeric GTPases localized on the

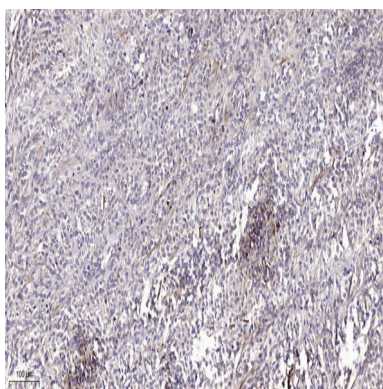
Product Name: Rab 1B Rabbit Polyclonal Antibody
Catalog #: AP Rab16743



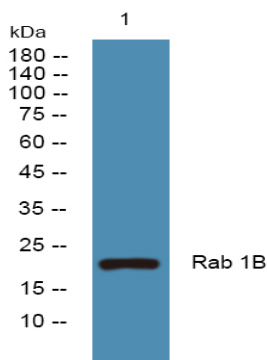
cytoplasmic surfaces of distinct membrane-bound organelles. RAB1B functions in the early secretory pathway and is essential for vesicle transport between the endoplasmic reticulum (ER) and Golgi (Chen et al., 1997 [PubMed 9030196]; Alvarez et al., 2003 [PubMed 12802079]).[supplied by OMIM, Jan 2009],function:Protein transport. Regulates vesicular transport between the endoplasmic reticulum and successive Golgi compartments.,miscellaneous:Rab-1B binds GTP and GDP and possesses intrinsic GTPase activity.,PTM:Prenylated; by GGTase II, only after interaction of the substrate with Rab escort protein 1 (REP1).,similarity:Belongs to the small GTPase superfamily. Rab family.,subcellular location:Targeted by REP1 to membranes of specific subcellular compartments including endoplasmic reticulum, Golgi apparatus, and intermediate vesicles between these two compartments. In the GDP-form, colocalizes with GDI in the cytoplasm.,subunit:Interacts with MICAL1, MICAL2 and MICAL3. Interacts with GDI1; the interaction requires the GDP-bound state. Interacts with CHM/REP1; the interaction requires the GDP-bound form and is necessary for prenylation by GGTase II.,

Research Area

Image Data



Immunohistochemical analysis of paraffin-embedded human Colon cancer. 1, Antibody was diluted at 1:200 (4° overnight) .
2, Tris-EDTA, pH9.0 was used for antigen retrieval. 3, Secondary antibody was diluted at 1:200 (room temperature, 45min) .



Western blot analysis of lysates from SH-SY5Y cells, primary antibody was diluted at 1:1000, 4° over night

Product Name: Rab 1B Rabbit Polyclonal Antibody
Catalog #: APRab16743



Note

For research use only.