

## Summary

<b>Production Name</b>	Rab 11B Rabbit Polyclonal Antibody
<b>Description</b>	Rabbit Polyclonal Antibody
<b>Host</b>	Rabbit
<b>Application</b>	WB,IHC-P
<b>Reactivity</b>	Human,Mouse,Rat

## Performance

<b>Conjugation</b>	Unconjugated
<b>Modification</b>	Unmodified
<b>Isotype</b>	IgG
<b>Clonality</b>	Polyclonal
<b>Form</b>	Liquid
<b>Storage</b>	Store at 4°C short term. Aliquot and store at -20°C long term. Avoid freeze/thaw cycles.
<b>Buffer</b>	Liquid in PBS containing 50% glycerol, 0.5% BSA and 0.02% New type preservative N.
<b>Purification</b>	Affinity purification

## Immunogen

<b>Gene Name</b>	RAB11B
<b>Alternative Names</b>	RAB11B; YPT3; Ras-related protein Rab-11B; GTP-binding protein YPT3
<b>Gene ID</b>	9230.0
<b>SwissProt ID</b>	Q15907. The antiserum was produced against synthesized peptide derived from human RAB11B. AA range:164-213

## Application

<b>Dilution Ratio</b>	WB 1:500-2000, IHC-P 1:50-300
<b>Molecular Weight</b>	28kDa

## Background

The Ras superfamily of small GTP-binding proteins, which includes the Ras (see MIM 190020), Ral (see MIM 179550), Rho

**Product Name: Rab 11B Rabbit Polyclonal Antibody**  
**Catalog #: AP Rab16741**

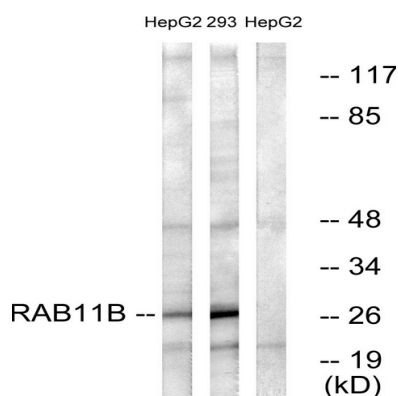


(see MIM 165390), Rap (see MIM 179520), and Rab (see MIM 179508) families, is involved in controlling a diverse set of essential cellular functions. The Rab family, including RAB11B, appears to play a critical role in regulating exocytotic and endocytotic pathways (summary by Zhu et al., 1994 [PubMed 7811277]).[supplied by OMIM, Nov 2010],function:Possesses GTPase activity.,similarity:Belongs to the small GTPase superfamily. Rab family.,subunit:Interacts with RAB11FIP1, RAB11FIP2, RAB11FIP3 and RAB11FIP4.,

## Research Area

Endocytosis;

## Image Data



Western blot analysis of lysates from HepG2 and 293 cells, using RAB11B Antibody. The lane on the right is blocked with the synthesized peptide.

## Note

For research use only.