

Product Name: PTP α Rabbit Polyclonal Antibody
Catalog #: APRab16683



Summary

Production Name	PTP α Rabbit Polyclonal Antibody
Description	Rabbit Polyclonal Antibody
Host	Rabbit
Application	WB,ELISA,IHC-P
Reactivity	Human,Mouse,Rat

Performance

Conjugation	Unconjugated
Modification	Unmodified
Isotype	IgG
Clonality	Polyclonal
Form	Liquid
Storage	Store at 4°C short term. Aliquot and store at -20°C long term. Avoid freeze/thaw cycles.
Buffer	Liquid in PBS containing 50% glycerol, 0.5% BSA and 0.02% New type preservative N.
Purification	Affinity purification

Immunogen

Gene Name	PTPRA
Alternative Names	PTPRA; PTPA; PTPRL2; Receptor-type tyrosine-protein phosphatase alpha; Protein-tyrosine phosphatase alpha; R-PTP-alpha
Gene ID	5786.0
SwissProt ID	P18433. Synthesized peptide derived from PTP α . at AA range: 730-810

Application

Dilution Ratio	WB 1:500-2000, IHC-P 1:50-300, ELISA 2000-20000
Molecular Weight	90kDa

Background

The protein encoded by this gene is a member of the protein tyrosine phosphatase (PTP) family. PTPs are known to be

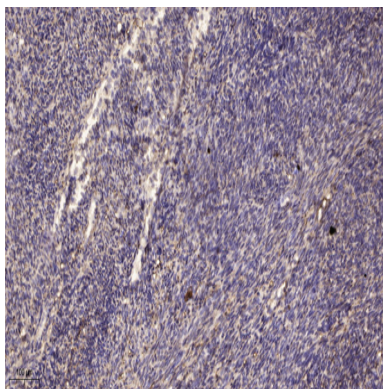
Product Name: PTP α Rabbit Polyclonal Antibody
Catalog #: APRab16683



signaling molecules that regulate a variety of cellular processes including cell growth, differentiation, mitotic cycle, and oncogenic transformation. This PTP contains an extracellular domain, a single transmembrane segment and two tandem intracytoplasmic catalytic domains, and thus represents a receptor-type PTP. This PTP has been shown to dephosphorylate and activate Src family tyrosine kinases, and is implicated in the regulation of integrin signaling, cell adhesion and proliferation. Three alternatively spliced variants of this gene, which encode two distinct isoforms, have been reported. [provided by RefSeq, Jul 2008],catalytic activity:Protein tyrosine phosphate + H(2)O = protein tyrosine + phosphate.,similarity:Belongs to the protein-tyrosine phosphatase family. Receptor class 4 subfamily.,similarity:Contains 2 tyrosine-protein phosphatase domains.,

Research Area

Image Data



Immunohistochemical analysis of paraffin-embedded human uterus. 1, Antibody was diluted at 1:200 (4° overnight) . 2, Tris-EDTA,pH9.0 was used for antigen retrieval. 3,Secondary antibody was diluted at 1:200 (room temperature, 45min) .

Note

For research use only.