

Product Name: PTGR2 Rabbit Polyclonal Antibody
Catalog #: APRab16645



Summary

Production Name	PTGR2 Rabbit Polyclonal Antibody
Description	Rabbit Polyclonal Antibody
Host	Rabbit
Application	WB,IHC-P,IF-P,IF-F,ICC/IF,ELISA
Reactivity	Human,Rat,Mouse

Performance

Conjugation	Unconjugated
Modification	Unmodified
Isotype	IgG
Clonality	Polyclonal
Form	Liquid
Storage	Store at 4°C short term. Aliquot and store at -20°C long term. Avoid freeze/thaw cycles.
Buffer	Liquid in PBS containing 50% glycerol, 0.5% BSA and 0.02% New type preservative N.
Purification	Affinity purification

Immunogen

Gene Name	PTGR2
Alternative Names	PTGR2; ZADH1; Prostaglandin reductase 2; PRG-2; 15-oxoprostaglandin 13-reductase; Zinc-binding alcohol dehydrogenase domain-containing protein 1
Gene ID	145482.0
SwissProt ID	Q8N8N7.The antiserum was produced against synthesized peptide derived from human ZADH1. AA range:181-230

Application

Dilution Ratio	WB 1:500-1:2000, IHC-P 1:100-1:300, ELISA 1:10000, IF-P/IF-F/ICC/IF 1:50-200
Molecular Weight	35kDa

Product Name: PTGR2 Rabbit Polyclonal Antibody
Catalog #: AP Rab16645

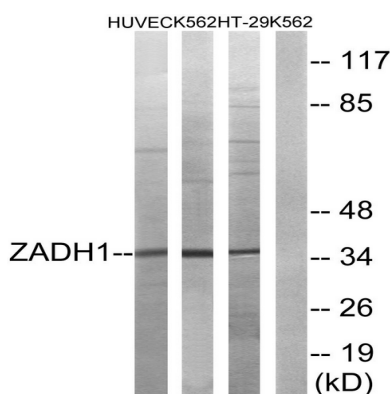


Background

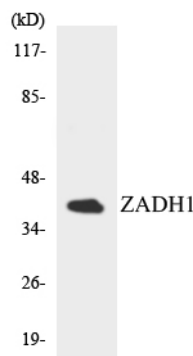
This gene encodes an enzyme involved in the metabolism of prostaglandins. The encoded protein catalyzes the NADPH-dependent conversion of 15-keto-prostaglandin E2 to 15-keto-13,14-dihydro-prostaglandin E2. This protein may also be involved in regulating activation of the peroxisome proliferator-activated receptor. Alternative splicing results in multiple transcript variants. [provided by RefSeq, Apr 2009], catalytic activity: 11- α -hydroxy-9,15-dioxoprost-5-enoate + NAD(P)(+) = (5Z)-(13E)-11- α -hydroxy-9,15-dioxoprost-5,13-dienoate + NAD(P)H, cofactor: NADPH, function: Functions as 15-oxo-prostaglandin 13-reductase and acts on 15-keto-PGE1, 15-keto-PGE2, 15-keto-PGE1- α and 15-keto-PGE2- α with highest activity towards 15-keto-PGE2. Overexpression represses transcriptional activity of PPARG and inhibits adipocyte differentiation, similarity: Belongs to the NADP-dependent oxidoreductase L4BD family, subunit: Monomer, tissue specificity: Widely expressed,

Research Area

Image Data

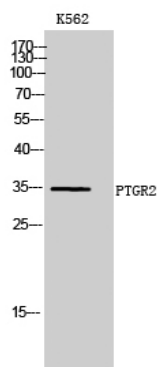


Western blot analysis of lysates from K562, HUVEC, and HT-29 cells, using ZADH1 Antibody. The lane on the right is blocked with the synthesized peptide.



Western blot analysis of the lysates from HepG2 cells using ZADH1 antibody.

Product Name: PTGR2 Rabbit Polyclonal Antibody
Catalog #: APRab16645



Western Blot analysis of K562 cells using PTGR2 Polyclonal Antibody

Note

For research use only.