

Summary

Production Name	PSMD11 Rabbit Polyclonal Antibody
Description	Rabbit Polyclonal Antibody
Host	Rabbit
Application	WB,IHC-P,IF-P,IF-F,ICC/IF,ELISA
Reactivity	Human,Mouse

Performance

Conjugation	Unconjugated
Modification	Unmodified
Isotype	IgG
Clonality	Polyclonal
Form	Liquid
Storage	Store at 4°C short term. Aliquot and store at -20°C long term. Avoid freeze/thaw cycles.
Buffer	Liquid in PBS containing 50% glycerol, 0.5% BSA and 0.02% New type preservative N.
Purification	Affinity purification

Immunogen

Gene Name	PSMD11 PSMD11; 26S proteasome non-ATPase regulatory subunit 11; 26S proteasome regulatory subunit RPN6; 26S proteasome regulatory subunit S9; 26S proteasome regulatory subunit p44.5
Alternative Names	
Gene ID	5717.0
SwissProt ID	O00231.The antiserum was produced against synthesized peptide derived from human PSMD11. AA range:271-320

Application

Dilution Ratio	WB 1:500-1:2000, IHC-P 1:100-1:300, ELISA 1:10000, IF-P/IF-F/ICC/IF 1:50-200
Molecular Weight	42kDa

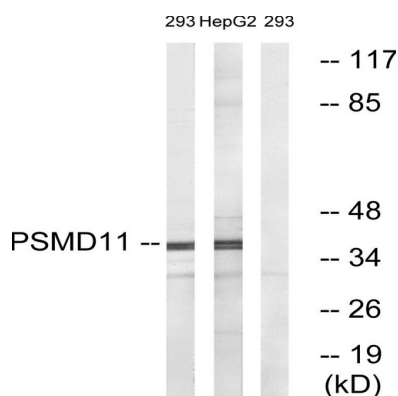
Background

The 26S proteasome is a multicatalytic proteinase complex with a highly ordered structure composed of 2 complexes, a 20S core and a 19S regulator. The 20S core is composed of 4 rings of 28 non-identical subunits; 2 rings are composed of 7 alpha subunits and 2 rings are composed of 7 beta subunits. The 19S regulator is composed of a base, which contains 6 ATPase subunits and 2 non-ATPase subunits, and a lid, which contains up to 10 non-ATPase subunits. Proteasomes are distributed throughout eukaryotic cells at a high concentration and cleave peptides in an ATP/ubiquitin-dependent process in a non-lysosomal pathway. This gene encodes a member of the proteasome subunit S9 family that functions as a non-ATPase subunit of the 19S regulator and is phosphorylated by AMP-activated protein kinase. Alternatively spliced transcript variants have been observed for this gene. [provided by RefSeq, function: Acts as a regulatory subunit of the 26S proteasome which is involved in the ATP-dependent degradation of ubiquitinated proteins., similarity: Belongs to the proteasome subunit S9 family., similarity: Contains 1 PCI domain., subunit: Component of the PA700 complex.,

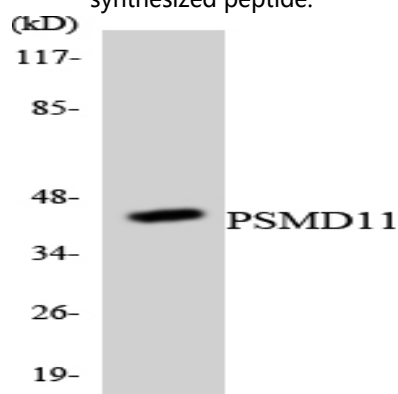
Research Area

Proteasome;

Image Data



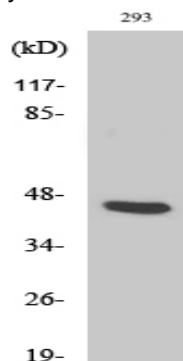
Western blot analysis of lysates from 293 and HepG2 cells, using PSMD11 Antibody. The lane on the right is blocked with the synthesized peptide.



Product Name: PSMD11 Rabbit Polyclonal Antibody
Catalog #: APRab16616



Western blot analysis of the lysates from RAW264.7 cells using PSMD11 antibody.



Western Blot analysis of various cells using PSMD11 Polyclonal Antibody

Note

For research use only.