

Summary

Production Name	PSK2 Rabbit Polyclonal Antibody
Description	Rabbit Polyclonal Antibody
Host	Rabbit
Application	WB,IHC-P,IF-P,IF-F,ICC/IF,ELISA
Reactivity	Human,Mouse,Rat

Performance

Conjugation	Unconjugated
Modification	Unmodified
Isotype	IgG
Clonality	Polyclonal
Form	Liquid
Storage	Store at 4°C short term. Aliquot and store at -20°C long term. Avoid freeze/thaw cycles.
Buffer	Liquid in PBS containing 50% glycerol, 0.5% BSA and 0.02% New type preservative N.
Purification	Affinity purification

Immunogen

Gene Name	TAOK1
Alternative Names	TAOK1; KIAA1361; MAP3K16; MARKK; Serine/threonine-protein kinase TAO1; Kinase from chicken homolog B; hKFC-B; MARK Kinase; MARKK; Prostate-derived sterile 20-like kinase 2; PSK-2; PSK2; Prostate-derived STE20-like kinase 2; Thousand and one
Gene ID	57551.0
SwissProt ID	Q7L7X3.The antiserum was produced against synthesized peptide derived from human TAOK1. AA range:431-480

Application

Dilution Ratio	WB 1:500-1:2000, IHC-P 1:100-1:300, ELISA 1:5000, IF-P/IF-F/ICC/IF 1:50-200
Molecular Weight	120kDa

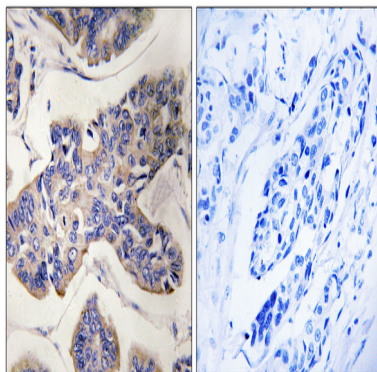
Background

catalytic activity:ATP + a protein = ADP + a phosphoprotein.,function:Phosphorylates MKK3 (By similarity). Activates the p38 MAP kinase pathway through the specific activation of the upstream MKK3 kinase.,PTM:Autophosphorylated.,similarity:Belongs to the protein kinase superfamily. STE Ser/Thr protein kinase family. STE20 subfamily.,similarity:Contains 1 protein kinase domain.,subunit:Self-associates. Interacts with MKK3.,tissue specificity:Highly expressed in the testis, and to a lower extent also expressed in brain, placenta, colon and skeletal muscle.,catalytic activity:ATP + a protein = ADP + a phosphoprotein.,function:Phosphorylates MKK3 (By similarity). Activates the p38 MAP kinase pathway through the specific activation of the upstream MKK3 kinase.,PTM:Autophosphorylated.,similarity:Belongs to the protein kinase superfamily. STE Ser/Thr protein kinase family. STE20 subfamily.,similarity:Contains 1 protein kinase domain.,subunit:Self-associates. Interacts with MKK3.,tissue specificity:Highly expressed in the testis, and to a lower extent also expressed in brain, placenta, colon and skeletal muscle.,

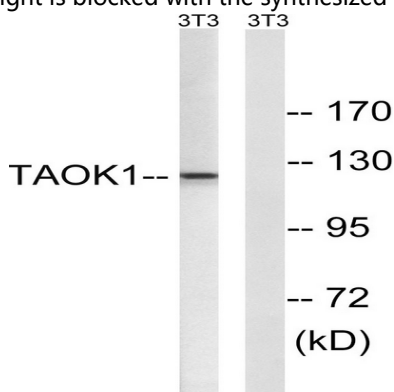
Research Area

MAPK_ERK_Growth;MAPK_G_Protein;

Image Data



Immunohistochemistry analysis of paraffin-embedded human breast carcinoma tissue, using TAOK1 Antibody. The picture on the right is blocked with the synthesized peptide.



Product Name: PSK2 Rabbit Polyclonal Antibody
Catalog #: APRab16603



Western blot analysis of lysates from NIH/3T3 cells, using TAOK1 Antibody. The lane on the right is blocked with the synthesized peptide.

Note

For research use only.