

## Summary

<b>Production Name</b>	PSG1 Rabbit Polyclonal Antibody
<b>Description</b>	Rabbit Polyclonal Antibody
<b>Host</b>	Rabbit
<b>Application</b>	WB,IHC-P,IF-P,IF-F,ICC/IF,ELISA
<b>Reactivity</b>	Human,Rat,Mouse

## Performance

<b>Conjugation</b>	Unconjugated
<b>Modification</b>	Unmodified
<b>Isotype</b>	IgG
<b>Clonality</b>	Polyclonal
<b>Form</b>	Liquid
<b>Storage</b>	Store at 4°C short term. Aliquot and store at -20°C long term. Avoid freeze/thaw cycles.
<b>Buffer</b>	Liquid in PBS containing 50% glycerol, 0.5% BSA and 0.02% New type preservative N.
<b>Purification</b>	Affinity purification

## Immunogen

<b>Gene Name</b>	PSG1
<b>Alternative Names</b>	PSG1; B1G1; PSBG1; PSGGA; Pregnancy-specific beta-1-glycoprotein 1; PS-beta-G-1; PSBG-1; Pregnancy-specific glycoprotein 1; CD66 antigen-like family member F;Fetal liver non-specific cross-reactive antigen 1/2; FL-NCA-1/2; PSG95; Pregnancy-specific beta-1 glycoprotein C/D; PS-beta-C/D; CD66f
<b>Gene ID</b>	5669.0
<b>SwissProt ID</b>	P11464.The antiserum was produced against synthesized peptide derived from the Internal region of human PSG1. AA range:221-270

## Application

<b>Dilution Ratio</b>	WB 1:500-1:2000, IHC-P 1:100-300, ELISA 1:20000, IF-P/IF-F/ICC/IF 1:50-200
<b>Molecular Weight</b>	46kDa

**Product Name: PSG1 Rabbit Polyclonal Antibody**  
**Catalog #: APRab16598**

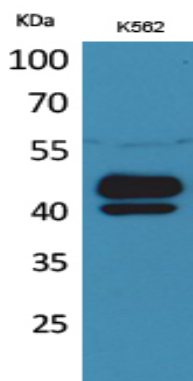


## Background

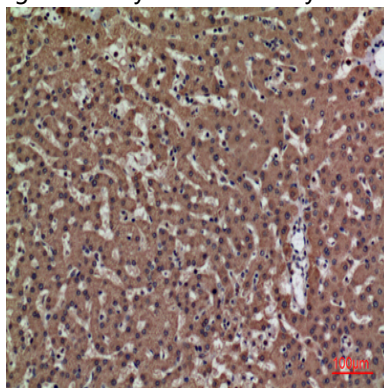
The human placenta is a multihormonal endocrine organ that produces hormones, enzymes, and other molecules that support fetal survival and development. Pregnancy-specific beta-1-glycoprotein (PSBG, PSG) is a major product of the syncytiotrophoblast, reaching concentrations of 100 to 290 mg/l at term in the serum of pregnant women (Horne et al., 1976 [PubMed 971765]). PSG is a member of the immunoglobulin (Ig) superfamily (Watanabe and Chou, 1988 [PubMed 3257488]; Streydio et al., 1988 [PubMed 3260773]).[supplied by OMIM, Oct 2009],developmental stage:PSBG are produced in high quantity during pregnancy.,similarity:Belongs to the immunoglobulin superfamily. CEA family.,similarity:Contains 1 Ig-like V-type (immunoglobulin-like) domain.,similarity:Contains 3 Ig-like C2-type (immunoglobulin-like) domains.,

## Research Area

## Image Data



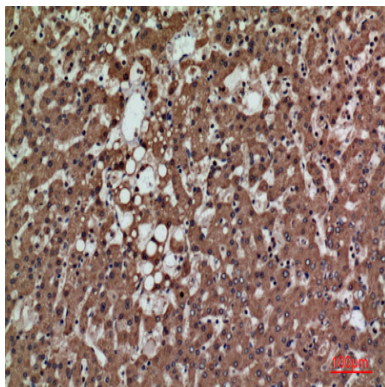
Western Blot analysis of K562 cells using PSG1 Polyclonal Antibody.. Secondary antibody was diluted at 1:20000



Immunohistochemical analysis of paraffin-embedded human-liver, antibody was diluted at 1:100

**Product Name: PSG1 Rabbit Polyclonal Antibody**  
**Catalog #: APRab16598**

---



Immunohistochemical analysis of paraffin-embedded human-liver, antibody was diluted at 1:100

**Note**

For research use only.