

Product Name: PRSS33 Rabbit Polyclonal Antibody
Catalog #: AP Rab16566



Summary

Production Name	PRSS33 Rabbit Polyclonal Antibody
Description	Rabbit Polyclonal Antibody
Host	Rabbit
Application	WB, IHC-P, IF-P, IF-F, ICC/IF, ELISA
Reactivity	Human, Rat, Mouse

Performance

Conjugation	Unconjugated
Modification	Unmodified
Isotype	IgG
Clonality	Polyclonal
Form	Liquid
Storage	Store at 4°C short term. Aliquot and store at -20°C long term. Avoid freeze/thaw cycles.
Buffer	Liquid in PBS containing 50% glycerol, 0.5% BSA and 0.02% New type preservative N.
Purification	Affinity purification

Immunogen

Gene Name	PRSS33
Alternative Names	PRSS33; Serine protease 33; Serine protease EOS
Gene ID	260429.0
SwissProt ID	Q8NF86. The antiserum was produced against synthesized peptide derived from human PRSS33. AA range: 18-67

Application

Dilution Ratio	WB 1:500-1:2000, IHC-P 1:100-1:300, ELISA 1:10000, IF-P/IF-F/ICC/IF 1:50-200
Molecular Weight	26kDa

Background

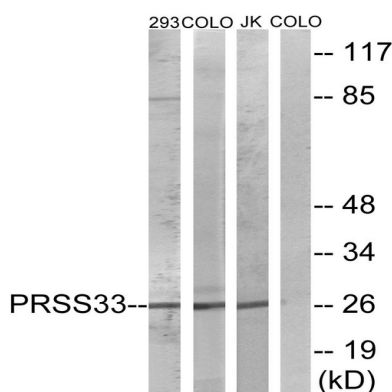
Product Name: PRSS33 Rabbit Polyclonal Antibody
Catalog #: AP Rab16566



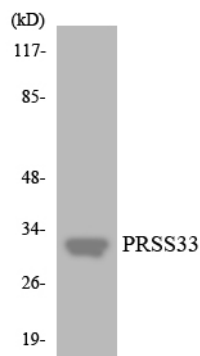
function: Serine protease that has amidolytic activity, cleaving its substrates before Arg residues., induction: Up-regulated by phorbol ester PMA., similarity: Belongs to the peptidase S1 family., similarity: Contains 1 peptidase S1 domain., tissue specificity: Predominantly expressed in macrophages. Present in the spleen, small and large intestine, lung and brain (at protein level). Highly expressed in peripheral leukocytes, ovary, retina, spleen and stomach. Moderately expressed in thymus, uterus and platelets, as well as some brain tissues, such as thalamus and fetal brain., function: Serine protease that has amidolytic activity, cleaving its substrates before Arg residues., induction: Up-regulated by phorbol ester PMA., similarity: Belongs to the peptidase S1 family., similarity: Contains 1 peptidase S1 domain., tissue specificity: Predominantly expressed in macrophages. Present in the spleen, small and large intestine, lung and brain (at protein level). Highly expressed in peripheral leukocytes, ovary, retina, spleen and stomach. Moderately expressed in thymus, uterus and platelets, as well as some brain tissues, such as thalamus and fetal brain.,

Research Area

Image Data

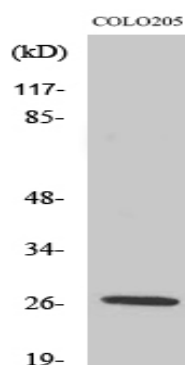


Western blot analysis of lysates from COLO, 293, and Jurkat cells, using PRSS33 Antibody. The lane on the right is blocked with the synthesized peptide.



Western blot analysis of the lysates from HT-29 cells using PRSS33 antibody.

Product Name: PRSS33 Rabbit Polyclonal Antibody
Catalog #: APRab16566



Western Blot analysis of various cells using PRSS33 Polyclonal Antibody

Note

For research use only.