

Product Name: PRPF39 Rabbit Polyclonal Antibody
Catalog #: AP Rab16549



Summary

Production Name	PRPF39 Rabbit Polyclonal Antibody
Description	Rabbit Polyclonal Antibody
Host	Rabbit
Application	WB,IHC-P,IF-P,IF-F,ICC/IF,ELISA
Reactivity	Human,Mouse

Performance

Conjugation	Unconjugated
Modification	Unmodified
Isotype	IgG
Clonality	Polyclonal
Form	Liquid
Storage	Store at 4°C short term. Aliquot and store at -20°C long term. Avoid freeze/thaw cycles.
Buffer	Liquid in PBS containing 50% glycerol, 0.5% BSA and 0.02% New type preservative N.
Purification	Affinity purification

Immunogen

Gene Name	PRPF39
Alternative Names	PRPF39; Pre-mRNA-processing factor 39; PRP39 homolog
Gene ID	55015.0
SwissProt ID	Q86UA1.The antiserum was produced against synthesized peptide derived from human PRPF39. AA range:263-312

Application

Dilution Ratio	WB 1:500-1:2000, IHC-P 1:100-1:300, ELISA 1:40000, IF-P/IF-F/ICC/IF 1:50-200
Molecular Weight	74kDa

Background

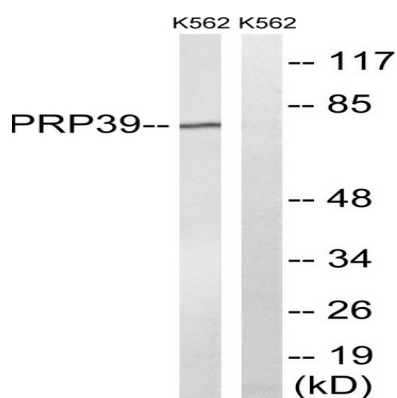
Product Name: PRPF39 Rabbit Polyclonal Antibody
Catalog #: APRab16549



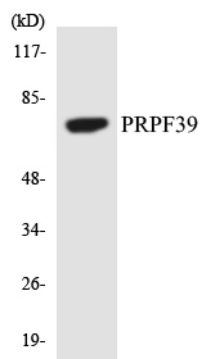
function:Involved in pre-mRNA splicing.,similarity:Belongs to the PRP39 family.,similarity:Contains 7 HAT repeats.,function:Involved in pre-mRNA splicing.,similarity:Belongs to the PRP39 family.,similarity:Contains 7 HAT repeats.,

Research Area

Image Data



Western blot analysis of lysates from K562 cells, using PRPF39 Antibody. The lane on the right is blocked with the synthesized peptide.



Western blot analysis of the lysates from COLO205 cells using PRPF39 antibody.

Note

For research use only.