

## Summary

|                        |                                  |
|------------------------|----------------------------------|
| <b>Production Name</b> | PRIM1 Rabbit Polyclonal Antibody |
| <b>Description</b>     | Rabbit Polyclonal Antibody       |
| <b>Host</b>            | Rabbit                           |
| <b>Application</b>     | WB,IHC-P,IF-P,IF-F,ICC/IF,ELISA  |
| <b>Reactivity</b>      | Human,Mouse,Rat                  |

## Performance

|                     |  |
|---------------------|--|
| <b>Conjugation</b>  | Unconjugated   |
| <b>Modification</b> | Unmodified   |
| <b>Isotype</b>      | IgG  |
| <b>Clonality</b>    | Polyclonal   |
| <b>Form</b>         | Liquid   |
| <b>Storage</b>      | Store at 4°C short term. Aliquot and store at -20°C long term. Avoid freeze/thaw cycles. |
| <b>Buffer</b>       | Liquid in PBS containing 50% glycerol, 0.5% BSA and 0.02% New type preservative N.       |
| <b>Purification</b> | Affinity purification  |

## Immunogen

|                          |  |
|--------------------------|--|
| <b>Gene Name</b>         | PRIM1  |
| <b>Alternative Names</b> | PRIM1; DNA primase small subunit; DNA primase 49 kDa subunit; p49  |
| <b>Gene ID</b>           | 5557.0   |
| <b>SwissProt ID</b>      | P49642.The antiserum was produced against synthesized peptide derived from human PRIM1. AA range:371-420 |

## Application

|                         |  |
|-------------------------|--|
| <b>Dilution Ratio</b>   | WB 1:500-1:2000, IHC-P 1:100-1:300, ELISA 1:10000, IF-P/IF-F/ICC/IF 1:50-200 |
| <b>Molecular Weight</b> | 50kDa  |

## Background

**Product Name: PRIM1 Rabbit Polyclonal Antibody**  
**Catalog #: AP Rab16494**

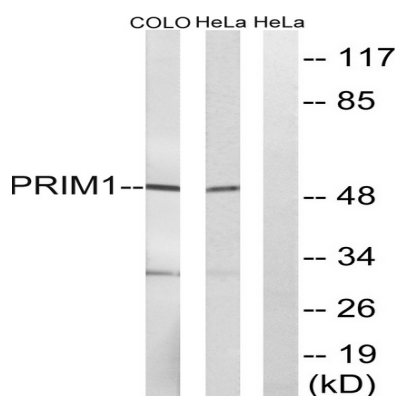


The replication of DNA in eukaryotic cells is carried out by a complex chromosomal replication apparatus, in which DNA polymerase alpha and primase are two key enzymatic components. Primase, which is a heterodimer of a small subunit and a large subunit, synthesizes small RNA primers for the Okazaki fragments made during discontinuous DNA replication. The protein encoded by this gene is the small, 49 kDa primase subunit. [provided by RefSeq, Jul 2008],function:DNA primase is the polymerase that synthesizes small RNA primers for the Okazaki fragments made during discontinuous DNA replication.,miscellaneous:The bound zinc ion is not a cofactor. It is bound to a zinc knuckle motif that may be involved in sequence recognition and the binding of ssDNA.,similarity:Belongs to the eukaryotic-type primase small subunit family.,subunit:Heterodimer of a small subunit and a large subunit.,

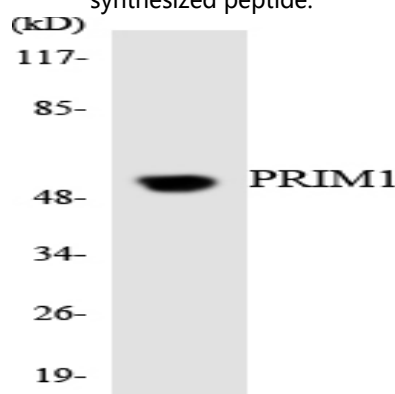
## Research Area

Purine metabolism;Pyrimidine metabolism;DNA replication;

## Image Data



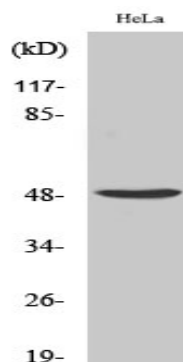
Western blot analysis of lysates from COLO and HeLa cells, using PRIM1 Antibody. The lane on the right is blocked with the synthesized peptide.



Western blot analysis of the lysates from K562 cells using PRIM1 antibody.

**Product Name: PRIM1 Rabbit Polyclonal Antibody**  
**Catalog #: APRab16494**

---



Western Blot analysis of various cells using PRIM1 Polyclonal Antibody cells nucleus extracted by Minute TM Cytoplasmic and Nuclear Fractionation kit (SC-003, Inventbiotech, MN, USA) .

### **Note**

For research use only.