

Product Name: PRDM3 Rabbit Polyclonal Antibody
Catalog #: APRab16472



Summary

Production Name	PRDM3 Rabbit Polyclonal Antibody
Description	Rabbit Polyclonal Antibody
Host	Rabbit
Application	WB,IHC-P,IF-P,IF-F,ICC/IF,ELISA
Reactivity	Human,Rat,Mouse

Performance

Conjugation	Unconjugated
Modification	Unmodified
Isotype	IgG
Clonality	Polyclonal
Form	Liquid
Storage	Store at 4°C short term. Aliquot and store at -20°C long term. Avoid freeze/thaw cycles.
Buffer	Liquid in PBS containing 50% glycerol, 0.5% BSA and 0.02% New type preservative N.
Purification	Affinity purification

Immunogen

Gene Name	MECOM
Alternative Names	MECOM; MDS1; MDS1 and EVI1 complex locus protein MDS1; Myelodysplasia syndrome 1 protein; Myelodysplasia syndrome-associated protein 1
Gene ID	4197.0
SwissProt ID	Q13465.The antiserum was produced against synthesized peptide derived from human MECOM. AA range:1-50

Application

Dilution Ratio	WB 1:500-1:2000, IHC-P 1:100-1:300, ELISA 1:20000, IF-P/IF-F/ICC/IF 1:50-200
Molecular Weight	18kDa

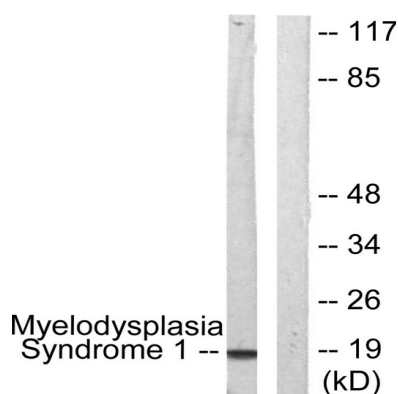
Background

The protein encoded by this gene is a transcriptional regulator and oncoprotein that may be involved in hematopoiesis, apoptosis, development, and cell differentiation and proliferation. The encoded protein can interact with CTBP1, SMAD3, CREBBP, KAT2B, MAPK8, and MAPK9. This gene can undergo translocation with the AML1 gene, resulting in overexpression of this gene and the onset of leukemia. Several transcript variants encoding a few different isoforms have been found for this gene. [provided by RefSeq, Mar 2011],disease:A chromosomal aberration involving EVI1 is a cause of chronic myelogenous leukemia (CML). Translocation t(3;21)(q26;q22) with RUNX1/AML1.,disease:A chromosomal aberration involving MDS1 is found in a form of acute myeloid leukemia (AML). Translocation t(3;21) with AML1.,miscellaneous:Can be produced either as a separate transcript and as a normal fusion transcript with EVI1.,PTM:Phosphorylated upon DNA damage, probably by ATM or ATR.,similarity:Contains 10 C2H2-type zinc fingers.,subunit:May interact with CTBP1.,

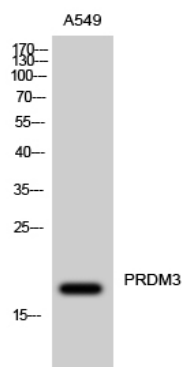
Research Area

MAPK_ERK_Growth;MAPK_G_Protein;Pathways in cancer;Chronic myeloid leukemia;

Image Data



Western blot analysis of lysates from A549 cells, using Myelodysplasia Syndrome 1 Antibody. The lane on the right is blocked with the synthesized peptide.



Western Blot analysis of A549 cells using PRDM3 Polyclonal Antibody cells nucleus extracted by Minute TM Cytoplasmic and Nuclear Fractionation kit (SC-003, Invent biotech, MN, USA) .

Product Name: PRDM3 Rabbit Polyclonal Antibody
Catalog #: APRab16472



Note

For research use only.