

Product Name: PRDM12 Rabbit Polyclonal Antibody
Catalog #: APRab16470



Summary

Production Name	PRDM12 Rabbit Polyclonal Antibody
Description	Rabbit Polyclonal Antibody
Host	Rabbit
Application	IF-P,IF-F,ICC/IF,ELISA,IHC-P
Reactivity	Human,Mouse

Performance

Conjugation	Unconjugated
Modification	Unmodified
Isotype	IgG
Clonality	Polyclonal
Form	Liquid
Storage	Store at 4°C short term. Aliquot and store at -20°C long term. Avoid freeze/thaw cycles.
Buffer	Liquid in PBS containing 50% glycerol, 0.5% BSA and 0.02% New type preservative N.
Purification	Affinity purification

Immunogen

Gene Name	PRDM12
Alternative Names	PRDM12; PFM9; PR domain zinc finger protein 12; PR domain-containing protein 12
Gene ID	59335.0
SwissProt ID	Q9H4Q4.The antiserum was produced against synthesized peptide derived from human PRDM12. AA range:191-240

Application

Dilution Ratio	IF-P/IF-F/ICC/IF/ICC 1:50-300, ELISA 1:2000-20000, IHC-P 1:50-200
Molecular Weight	40kDa

Background

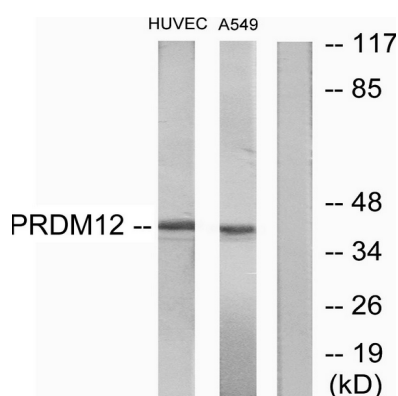
Product Name: PRDM12 Rabbit Polyclonal Antibody
Catalog #: APRab16470



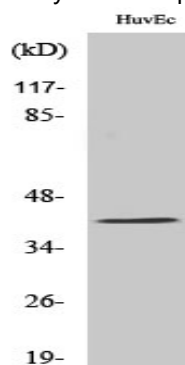
function:May be involved in transcriptional regulation.,similarity:Contains 1 SET domain.,similarity:Contains 3 C2H2-type zinc fingers.,function:May be involved in transcriptional regulation.,similarity:Contains 1 SET domain.,similarity:Contains 3 C2H2-type zinc fingers.,

Research Area

Image Data



Western blot analysis of lysates from HUVEC and A549 cells, using PRDM12 Antibody. The lane on the right is blocked with the synthesized peptide.



Western Blot analysis of various cells using PRDM12 Polyclonal Antibody cells nucleus extracted by Minute TM Cytoplasmic and Nuclear Fractionation kit (SC-003, Inventbiotech, MN, USA) .

Note

For research use only.