

Product Name: PRC Rabbit Polyclonal Antibody
Catalog #: APRab16461



Summary

Production Name	PRC Rabbit Polyclonal Antibody
Description	Rabbit Polyclonal Antibody
Host	Rabbit
Application	IHC-P,IF-P,IF-F,ICC/IF,ELISA
Reactivity	Human,Mouse

Performance

Conjugation	Unconjugated
Modification	Unmodified
Isotype	IgG
Clonality	Polyclonal
Form	Liquid
Storage	Store at 4°C short term. Aliquot and store at -20°C long term. Avoid freeze/thaw cycles.
Buffer	Liquid in PBS containing 50% glycerol, 0.5% BSA and 0.02% New type preservative N.
Purification	Affinity purification

Immunogen

Gene Name	PPRC1
Alternative Names	PPRC1; KIAA0595; Peroxisome proliferator-activated receptor gamma coactivator-related protein 1; PGC-1-related coactivator; PRC
Gene ID	23082.0
SwissProt ID	Q5VV67. The antiserum was produced against synthesized peptide derived from human PPRC1. AA range:1609-1658

Application

Dilution Ratio	IHC-P 1:100-1:300, ELISA 1:40000, IF-P/IF-F/ICC/IF 1:50-200
Molecular Weight	

Background

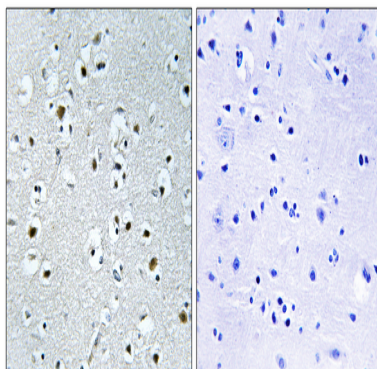
Product Name: PRC Rabbit Polyclonal Antibody
Catalog #: AP Rab16461



The protein encoded by this gene is similar to PPAR-gamma coactivator 1 (PPARGC1/PGC-1), a protein that can activate mitochondrial biogenesis in part through a direct interaction with nuclear respiratory factor 1 (NRF1). This protein has been shown to interact with NRF1. It is thought to be a functional relative of PPAR-gamma coactivator 1 that activates mitochondrial biogenesis through NRF1 in response to proliferative signals. Alternative splicing results in multiple transcript variants. [provided by RefSeq, Dec 2013],function:Acts as a coactivator during transcriptional activation of nuclear genes related to mitochondrial biogenesis and cell growth. Involved in the transcription coactivation of CREB and NRF1 target genes.,induction:Up-regulated by serum (at protein level),similarity:Contains 1 RRM (RNA recognition motif) domain.,subcellular location:Colocalizes with NRF1.,subunit:Interacts with CREB1 and NRF1.,tissue specificity:Strongly expressed in heart and skeletal muscle, moderately in lung, placenta, intestine, liver, kidney, spleen, thymus, colon and brain. Also expressed in several oncocytic thyroid tumors.,

Research Area

Image Data



Immunohistochemistry analysis of paraffin-embedded human brain tissue, using PPRC1 Antibody. The picture on the right is blocked with the synthesized peptide.

Note

For research use only.