

Product Name: PPP1R1C Rabbit Polyclonal Antibody
Catalog #: APRab16426



Summary

Production Name	PPP1R1C Rabbit Polyclonal Antibody
Description	Rabbit Polyclonal Antibody
Host	Rabbit
Application	IHC-P,IF-P,IF-F,ICC/IF,ELISA
Reactivity	Human,Mouse

Performance

Conjugation	Unconjugated
Modification	Unmodified
Isotype	IgG
Clonality	Polyclonal
Form	Liquid
Storage	Store at 4°C short term. Aliquot and store at -20°C long term. Avoid freeze/thaw cycles.
Buffer	Liquid in PBS containing 50% glycerol, 0.5% BSA and 0.02% New type preservative N.
Purification	Affinity purification

Immunogen

Gene Name	PPP1R1C
Alternative Names	PPP1R1C; Protein phosphatase 1 regulatory subunit 1C; Inhibitor-5 of protein phosphatase 1; IPP5
Gene ID	151242.0
SwissProt ID	Q8WVI7. The antiserum was produced against synthesized peptide derived from human PPP1R1C. AA range:5-54

Application

Dilution Ratio	IHC-P 1:100-1:300, ELISA 1:10000, IF-P/IF-F/ICC/IF 1:50-200
Molecular Weight	

Background

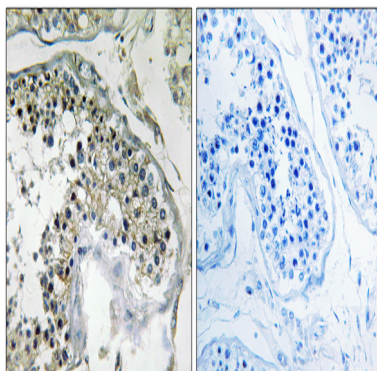
Product Name: PPP1R1C Rabbit Polyclonal Antibody
Catalog #: APRab16426



Protein phosphatase-1 (PP1) is a major serine/threonine phosphatase that regulates a variety of cellular functions. PP1 consists of a catalytic subunit (see PPP1CA; MIM 176875) and regulatory subunits that determine the subcellular localization of PP1 or regulate its function. PPP1R1C belongs to a group of PP1 inhibitory subunits that are themselves regulated by phosphorylation (Wang et al., 2008 [PubMed 18310074]).[supplied by OMIM, Feb 2010],function:Inhibitor of protein-phosphatase 1.,similarity:Belongs to the protein phosphatase inhibitor 1 family.,

Research Area

Image Data



Immunohistochemistry analysis of paraffin-embedded human testis tissue, using PPP1R1C Antibody. The picture on the right is blocked with the synthesized peptide.

Note

For research use only.