

Product Name: PPP1R14D Rabbit Polyclonal Antibody
Catalog #: APRab16424



Summary

Production Name	PPP1R14D Rabbit Polyclonal Antibody
Description	Rabbit Polyclonal Antibody
Host	Rabbit
Application	WB,IHC-P,IF-P,IF-F,ICC/IF,ELISA
Reactivity	Human,Rat,Mouse

Performance

Conjugation	Unconjugated
Modification	Unmodified
Isotype	IgG
Clonality	Polyclonal
Form	Liquid
Storage	Store at 4°C short term. Aliquot and store at -20°C long term. Avoid freeze/thaw cycles.
Buffer	Liquid in PBS containing 50% glycerol, 0.5% BSA and 0.02% New type preservative N.
Purification	Affinity purification

Immunogen

Gene Name	PPP1R14D
Alternative Names	PPP1R14D; GBPI; Protein phosphatase 1 regulatory subunit 14D; Gastrointestinal and brain-specific PP1-inhibitory protein 1; GBPI-1
Gene ID	54866.0
SwissProt ID	Q9NXH3.The antiserum was produced against synthesized peptide derived from human PPP1R14D. AA range:66-115

Application

Dilution Ratio	WB 1:500-1:2000, IHC-P 1:100-1:300, ELISA 1:5000, IF-P/IF-F/ICC/IF 1:50-200
Molecular Weight	24kDa

Product Name: PPP1R14D Rabbit Polyclonal Antibody
Catalog #: APRab16424

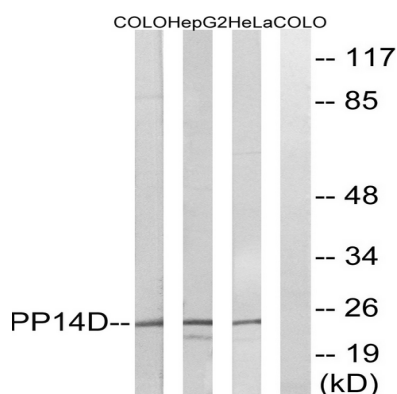


Background

Protein phosphatase-1 (PP1; see MIM 176875) is a major cellular phosphatase that reverses serine/threonine protein phosphorylation. PPP1R14D is a PP1 inhibitor that itself is regulated by phosphorylation (Liu et al., 2004 [PubMed 12974676]).[supplied by OMIM, Feb 2010],function:Inhibitor of PPP1CA. Has inhibitory activity only when phosphorylated, creating a molecular switch for regulating the phosphorylation status of PPP1CA substrates and smooth muscle contraction.,PTM:Phosphorylated on several residues.,similarity:Belongs to the PP1 inhibitor family.,tissue specificity:Detected in colon, intestine, kidney and brain cortex.,

Research Area

Image Data



Western blot analysis of lysates from HeLa, HepG2, and COLO cells, using PPP1R14D Antibody. The lane on the right is blocked with the synthesized peptide.



Western Blot analysis of various cells using PPP1R14D Polyclonal Antibody

Note

For research use only.