

Product Name: PPM1E Rabbit Polyclonal Antibody
Catalog #: APRab16419



Summary

Production Name	PPM1E Rabbit Polyclonal Antibody
Description	Rabbit Polyclonal Antibody
Host	Rabbit
Application	WB,ELISA
Reactivity	Human,Mouse,Rat

Performance

Conjugation	Unconjugated
Modification	Unmodified
Isotype	IgG
Clonality	Polyclonal
Form	Liquid
Storage	Store at 4°C short term. Aliquot and store at -20°C long term. Avoid freeze/thaw cycles.
Buffer	Liquid in PBS containing 50% glycerol, and 0.02% New type preservative N.
Purification	Affinity purification

Immunogen

Gene Name	PPM1E CAMKN KIAA1072 POPX1
Alternative Names	
Gene ID	
SwissProt ID	Q8WY54. Synthesized peptide derived from human protein . at AA range: 460-540

Application

Dilution Ratio	WB 1:500-2000, ELISA 1:5000-20000
Molecular Weight	84kDa

Background

This gene encodes a member of the PPM family of serine/threonine-protein phosphatases. The encoded protein is localized to the nucleus and dephosphorylates and inactivates multiple substrates including serine/threonine-protein kinase PAK 1,

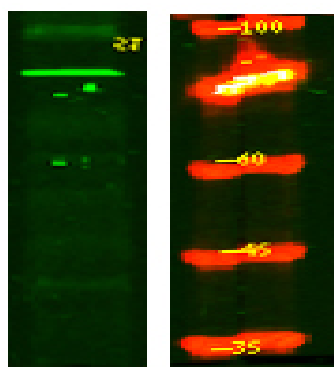
Product Name: PPM1E Rabbit Polyclonal Antibody
Catalog #: APRab16419



5'-AMP-activated protein kinase (AMPK) and the multifunctional calcium/calmodulin-dependent protein kinases. Alternatively spliced transcript variants have been observed for this gene. [provided by RefSeq, May 2012], catalytic activity: A phosphoprotein + H₂O = a protein + phosphate, cofactor: Binds 2 magnesium or manganese ions per subunit, function: Protein phosphatase that inactivates multifunctional CaM kinases such as CAMK4 and CAMK2 (By similarity). Dephosphorylates and inactivates PAK. May play a role in the inhibition of actin fiber stress breakdown and in morphological changes driven by TNK2/CDC42, similarity: Belongs to the PP2C family, similarity: Contains 1 PP2C-like domain, subcellular location: A truncated form, major form, with the C-terminal part missing, is mostly found in the cytoplasm and a little in the nucleus. The full length, minor form, is found in the nucleus, subunit: Heterotrimer. Interacts with PAX1 and ARHGEF6 (or ARHGEF7),

Research Area

Image Data



Western Blot analysis of Hela lysis, using primary antibody at 1:1000 dilution. Secondary antibody was diluted at 1:10000

Note

For research use only.