

Product Name: PP4R2 Rabbit Polyclonal Antibody
Catalog #: APRab16404



Summary

Production Name	PP4R2 Rabbit Polyclonal Antibody
Description	Rabbit Polyclonal Antibody
Host	Rabbit
Application	WB,IHC-P,IF-P,IF-F,ICC/IF,ELISA
Reactivity	Human,Monkey

Performance

Conjugation	Unconjugated
Modification	Unmodified
Isotype	IgG
Clonality	Polyclonal
Form	Liquid
Storage	Store at 4°C short term. Aliquot and store at -20°C long term. Avoid freeze/thaw cycles.
Buffer	Liquid in PBS containing 50% glycerol, 0.5% BSA and 0.02% New type preservative N.
Purification	Affinity purification

Immunogen

Gene Name	PPP4R2
Alternative Names	PPP4R2; SBB157; Serine/threonine-protein phosphatase 4 regulatory subunit 2
Gene ID	151987.0
SwissProt ID	Q9NY27.The antiserum was produced against synthesized peptide derived from human PPP4R2. AA range:171-220

Application

Dilution Ratio	WB 1:500-1:2000, IHC-P 1:100-1:300, ELISA 1:5000, IF-P/IF-F/ICC/IF 1:50-200
Molecular Weight	50kDa

Background

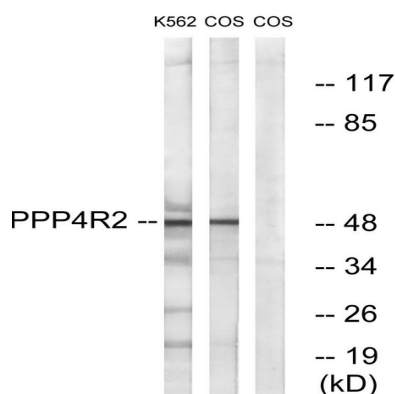
Product Name: PP4R2 Rabbit Polyclonal Antibody
Catalog #: AP Rab16404



The protein encoded by this gene is a regulatory subunit of the serine/threonine-protein phosphatase 4 complex. In addition to being required for efficient DNA double strand break repair, this complex plays a role in organization of microtubules at centrosomes and processing of spliceosomal snRNPs. Several transcript variants encoding different isoforms have been found for this gene. [provided by RefSeq, Dec 2015],function:Regulatory subunit of serine/threonine-protein phosphatase 4 (PP4). May regulate the activity of PPP4C at centrosomal microtubule organizing centers. Its interaction with the SMN complex leads to enhance the temporal localization of snRNPs, suggesting a role of PPP4C in maturation of spliceosomal snRNPs. The PPP4C-PPP4R2-PPP4R3A PP4 complex specifically dephosphorylates H2AFX phosphorylated on 'Ser-140' (gamma-H2AFX) generated during DNA replication and required for DNA DSB repair.,sequence caution:Contaminating sequence. Potential poly-A sequence.,similarity:Belongs to the PPP4R2 family.,subunit:Serine/threonine-protein phosphatase 4 (PP4) occurs in different assemblies of the catalytic and one or more regulatory subunits. Component of the PP4 complexes PPP4C-PPP4R2, PPP4C-PPP4R2-PPP4R3A and PPP4C-PPP4R2-PPP4R3B. The PPP4C-PPP4R2 complex appears to be a tetramer composed of 2 molecules of PPP4C and 2 molecules of PPP4R2. Interacts with DDX20/GEMIN3 and GEMIN4.,tissue specificity:Widely expressed.,

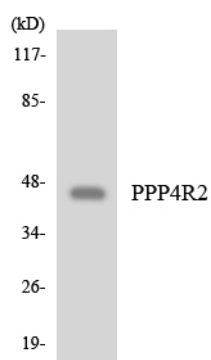
Research Area

Image Data

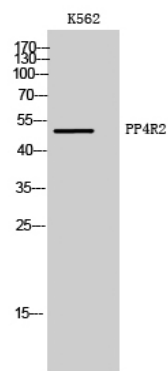


Western blot analysis of lysates from K562 and COS7 cells, using PPP4R2 Antibody. The lane on the right is blocked with the synthesized peptide.

Product Name: PP4R2 Rabbit Polyclonal Antibody
Catalog #: APRab16404



Western blot analysis of the lysates from COLO205 cells using PPP4R2 antibody.



Western Blot analysis of K562 cells using PP4R2 Polyclonal Antibody

Note

For research use only.