

**Product Name: POTE15 Rabbit Polyclonal Antibody**  
**Catalog #: APRab16383**



## Summary

|                        |                                   |
|------------------------|-----------------------------------|
| <b>Production Name</b> | POTE15 Rabbit Polyclonal Antibody |
| <b>Description</b>     | Rabbit Polyclonal Antibody        |
| <b>Host</b>            | Rabbit                            |
| <b>Application</b>     | WB,IHC-P,IF-P,IF-F,ICC/IF,ELISA   |
| <b>Reactivity</b>      | Human,Rat,Mouse                   |

## Performance

|                     |  |
|---------------------|--|
| <b>Conjugation</b>  | Unconjugated   |
| <b>Modification</b> | Unmodified   |
| <b>Isotype</b>      | IgG  |
| <b>Clonality</b>    | Polyclonal   |
| <b>Form</b>         | Liquid   |
| <b>Storage</b>      | Store at 4°C short term. Aliquot and store at -20°C long term. Avoid freeze/thaw cycles. |
| <b>Buffer</b>       | Liquid in PBS containing 50% glycerol, 0.5% BSA and 0.02% New type preservative N.       |
| <b>Purification</b> | Affinity purification  |

## Immunogen

|                          |  |
|--------------------------|--|
| <b>Gene Name</b>         | POTEB  |
| <b>Alternative Names</b> | POTEB; A26B1; POTE15; POTE ankyrin domain family member B; ANKRD26-like family B member 1; Prostate; ovary, testis-expressed protein on chromosome 15; POTE-15 |
| <b>Gene ID</b>           | 339010.0   |
| <b>SwissProt ID</b>      | Q6S5H4.The antiserum was produced against synthesized peptide derived from human A26B1. AA range:481-530   |

## Application

|                         |   |
|-------------------------|---|
| <b>Dilution Ratio</b>   | WB 1:500-1:2000, IHC-P 1:100-1:300, ELISA 1:5000, IF-P/IF-F/ICC/IF 1:50-200 |
| <b>Molecular Weight</b> | 60kDa   |

**Product Name: POTE15 Rabbit Polyclonal Antibody**  
**Catalog #: AP Rab16383**

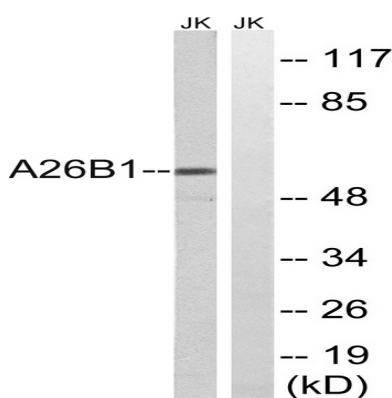


## Background

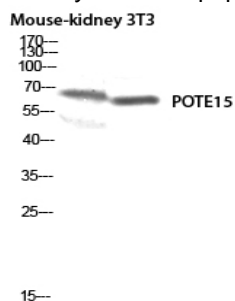
POTEB (POTE Ankyrin Domain Family Member B) is a Protein Coding gene. An important paralog of this gene is ANKRD18A.

## Research Area

## Image Data



Western blot analysis of lysates from Jurkat cells, using A26B1 Antibody. The lane on the right is blocked with the synthesized peptide.



Western blot analysis of Mouse-kidney 3T3 lysis using POTE15 antibody. Antibody was diluted at 1:500

## Note

For research use only.