

Product Name: POM121 Rabbit Polyclonal Antibody
Catalog #: APRab16366



Summary

Production Name	POM121 Rabbit Polyclonal Antibody
Description	Rabbit Polyclonal Antibody
Host	Rabbit
Application	WB,IHC-P,IF-P,IF-F,ICC/IF,ELISA
Reactivity	Human,Mouse,Rat

Performance

Conjugation	Unconjugated
Modification	Unmodified
Isotype	IgG
Clonality	Polyclonal
Form	Liquid
Storage	Store at 4°C short term. Aliquot and store at -20°C long term. Avoid freeze/thaw cycles.
Buffer	Liquid in PBS containing 50% glycerol, 0.5% BSA and 0.02% New type preservative N.
Purification	Affinity purification

Immunogen

Gene Name	POM121 POM121; KIAA0618; NUP121; POM121A; Nuclear envelope pore membrane protein
Alternative Names	POM 121; Nuclear envelope pore membrane protein POM 121A; Nucleoporin Nup121; Pore membrane protein of 121 kDa; POM121B; Putative nuclear envelope pore membrane prote
Gene ID	9883.0
SwissProt ID	Q96HA1/A6NF01/A8CG34.The antiserum was produced against synthesized peptide derived from human POM121. AA range:1197-1246

Application

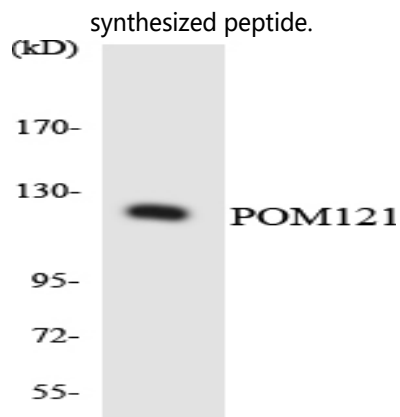
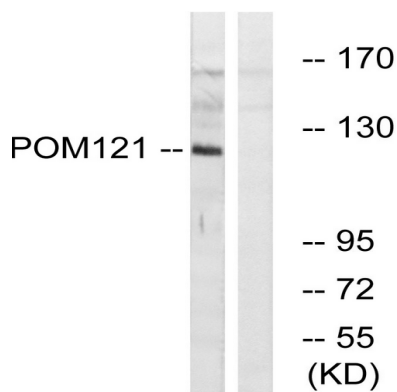
Dilution Ratio	WB 1:500-1:2000, IHC-P 1:100-1:300, ELISA 1:40000, IF-P/IF-F/ICC/IF 1:50-200
Molecular Weight	125kDa

Background

This gene encodes a transmembrane protein that localizes to the inner nuclear membrane and forms a core component of the nuclear pore complex, which mediates transport to and from the nucleus. The encoded protein may anchor this complex to the nuclear envelope. There are multiple related genes and pseudogenes for this gene on chromosomes 5, 7, 15, and 22. Alternatively spliced transcript variants encoding different isoforms have been observed. [provided by RefSeq, Jul 2013], domain: Contains F-X-F-G repeats, function: Essential component of the nuclear pore complex (NPC). The repeat-containing domain may be involved in anchoring components of the pore complex to the pore membrane. When overexpressed in cells induces the formation of cytoplasmic annulate lamellae (AL), similarity: Belongs to the POM121 family, subcellular location: Stably associated with the NPC throughout interphase and the endoplasmic reticulum during metaphase,

Research Area

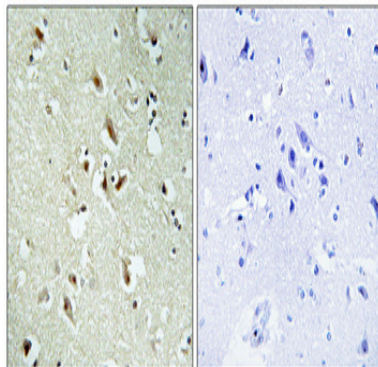
Image Data



Product Name: POM121 Rabbit Polyclonal Antibody
Catalog #: APRab16366



Western blot analysis of the lysates from HUVECcells using POM121 antibody.



Immunohistochemical analysis of paraffin-embedded Human brain. Antibody was diluted at 1:100 (4°,overnight) . High-pressure and temperature Tris-EDTA,pH8.0 was used for antigen retrieval. Negative contrl (right) obtained from antibody was pre-absorbed by immunogen peptide.

Note

For research use only.