

Summary

Production Name	POLR3B Rabbit Polyclonal Antibody
Description	Rabbit Polyclonal Antibody
Host	Rabbit
Application	WB,IHC-P,IF-P,IF-F,ICC/IF,ELISA
Reactivity	Human,Mouse,Rat

Performance

Conjugation	Unconjugated
Modification	Unmodified
Isotype	IgG
Clonality	Polyclonal
Form	Liquid
Storage	Store at 4°C short term. Aliquot and store at -20°C long term. Avoid freeze/thaw cycles.
Buffer	Liquid in PBS containing 50% glycerol, 0.5% BSA and 0.02% New type preservative N.
Purification	Affinity purification

Immunogen

Gene Name	POLR3B POLR3B; DNA-directed RNA polymerase III subunit RPC2; RNA polymerase III subunit
Alternative Names	C2; C128; DNA-directed RNA polymerase III 127.6 kDa polypeptide; DNA-directed RNA polymerase III subunit B
Gene ID	55703.0
SwissProt ID	Q9NW08.The antiserum was produced against synthesized peptide derived from human POLR3B. AA range:321-370

Application

Dilution Ratio	WB 1:500-1:2000, IHC-P 1:100-1:300, ELISA 1:20000, IF-P/IF-F/ICC/IF 1:50-200
Molecular Weight	128kDa

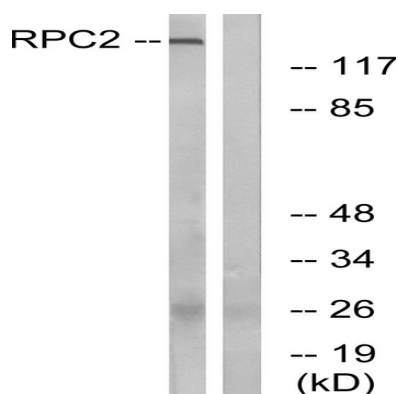
Background

This gene encodes the second largest subunit of RNA polymerase III, the polymerase responsible for synthesizing transfer and small ribosomal RNAs in eukaryotes. The largest subunit and the encoded protein form the catalytic center of RNA polymerase III. Mutations in this gene are a cause of hypomyelinating leukodystrophy. Alternatively spliced transcript variants encoding multiple isoforms have been observed for this gene. [provided by RefSeq, Dec 2011], catalytic activity: Nucleoside triphosphate + RNA(n) = diphosphate + RNA(n+1), function: DNA-dependent RNA polymerase catalyzes the transcription of DNA into RNA using the four ribonucleoside triphosphates as substrates. Second largest core component of RNA polymerase III which synthesizes small RNAs, such as 5S rRNA and tRNAs. Proposed to contribute to the polymerase catalytic activity and forms the polymerase active center together with the largest subunit. Pol III is composed of mobile elements and RPC2 is part of the core element with the central large cleft and probably a clamp element that moves to open and close the cleft, similarity: Belongs to the RNA polymerase beta chain family, subunit: Component of the RNA polymerase III (Pol III) complex consisting of 17 subunits,

Research Area

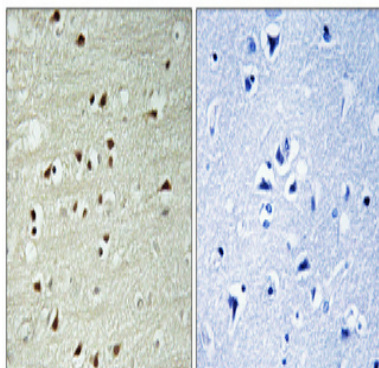
Purine metabolism; Pyrimidine metabolism; RNA polymerase; Cytosolic DNA-sensing pathway;

Image Data



Western blot analysis of lysates from LOVO cells, using RPC2 Antibody. The lane on the right is blocked with the synthesized peptide.

Product Name: POLR3B Rabbit Polyclonal Antibody
Catalog #: APRab16359



Immunohistochemical analysis of paraffin-embedded Human brain. Antibody was diluted at 1:100 (4°,overnight) . High-pressure and temperature Tris-EDTA,pH8.0 was used for antigen retrieval. Negative contrl (right) obtaned from antibody was pre-absorbed by immunogen peptide.

Note

For research use only.