

Summary

Production Name	PNPase Rabbit Polyclonal Antibody
Description	Rabbit Polyclonal Antibody
Host	Rabbit
Application	WB,IHC-P,IF-P,IF-F,ICC/IF,ELISA
Reactivity	Human,Mouse

Performance

Conjugation	Unconjugated
Modification	Unmodified
Isotype	IgG
Clonality	Polyclonal
Form	Liquid
Storage	Store at 4°C short term. Aliquot and store at -20°C long term. Avoid freeze/thaw cycles.
Buffer	Liquid in PBS containing 50% glycerol, 0.5% BSA and 0.02% New type preservative N.
Purification	Affinity purification

Immunogen

Gene Name	PNPT1 PNPT1; PNPASE; Polyribonucleotide nucleotidyltransferase 1; mitochondrial; 3'-5' RNA
Alternative Names	exonuclease OLD35; PNPase old-35; Polynucleotide phosphorylase 1; PNPase 1; Polynucleotide phosphorylase-like protein
Gene ID	87178.0
SwissProt ID	Q8TCS8.The antiserum was produced against synthesized peptide derived from human PNPT1. AA range:570-619

Application

Dilution Ratio	WB 1:500-1:2000, IHC-P 1:100-1:300, ELISA 1:20000, IF-P/IF-F/ICC/IF 1:50-200
Molecular Weight	85kDa

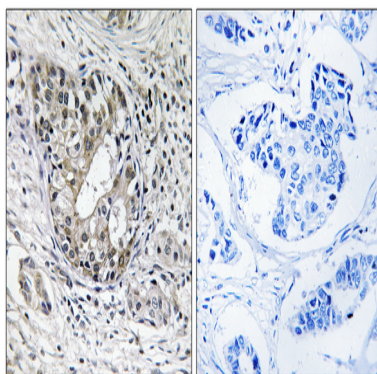
Background

The protein encoded by this gene belongs to the evolutionary conserved polynucleotide phosphorylase family comprised of phosphate dependent 3'-to-5' exoribonucleases implicated in RNA processing and degradation. This enzyme is predominantly localized in the mitochondrial intermembrane space and is involved in import of RNA to mitochondria. Mutations in this gene have been associated with combined oxidative phosphorylation deficiency-13 and autosomal recessive nonsyndromic deafness-70. Related pseudogenes are found on chromosomes 3 and 7. [provided by RefSeq, Dec 2012], catalytic activity: $\text{RNA}(n+1) + \text{phosphate} = \text{RNA}(n) + \text{a nucleoside diphosphate}$, function: Involved in mRNA degradation. Hydrolyzes single-stranded polyribonucleotides processively in the 3'- to 5'-direction, induction: Up-regulated in cells upon senescence and terminal differentiation. Up-regulated after treatment with interferon beta (IFN-beta), PTM: Phosphorylated upon DNA damage, probably by ATM or ATR, similarity: Belongs to the polyribonucleotide nucleotidyltransferase family, similarity: Contains 1 KH domain, similarity: Contains 1 S1 motif domain, subunit: Homotrimer (Potential). Interacts with TCL1A; the interaction has no effect on PNPT1 exonuclease activity.

Research Area

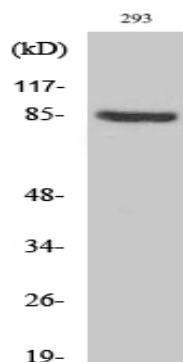
Purine metabolism; Pyrimidine metabolism; RNA degradation;

Image Data



Immunohistochemistry analysis of paraffin-embedded human breast carcinoma tissue, using PNPT1 Antibody. The picture on the right is blocked with the synthesized peptide.

Product Name: PNPase Rabbit Polyclonal Antibody
Catalog #: APRab16329



Western Blot analysis of various cells using PNPase Polyclonal Antibody diluted at 1: 1000

Note

For research use only.